

# Recombinant human Serpin B5/Maspin protein

Catalog Number: ATGP0331

## PRODUCT INFORMATION

---

### Expression system

E.coli

### Domain

1-375aa

### UniProt No.

P36952

### NCBI Accession No.

AY893387

### Alternative Names

Serine (or cysteine) proteinase inhibitor clade B (ovalbumin) member 5, Serine (or cysteine) proteinase inhibitor clade B (ovalbumin) member 5, Serpin B5, Protease inhibitor 5, SERPINB5, PI5, Serine (or cysteine) proteinase inhibitor clade B (ovalbumin) member 5 Serine (or cysteine) peptidase inhibitor, clade B, member 5, Ovalbumin, PI-5, Serpin peptidase inhibitor, Serpin peptidase inhibitor, clade B (ovalbumin), member 5, SERPINB5, Spi5, Spi7.

## PRODUCT SPECIFICATION

---

### Molecular Weight

44.2 kDa (395aa) confirmed by MALDI-TOF

### Concentration

1mg/ml (determined by Bradford assay)

### Formulation

Liquid in. 20mM Tris-HCl buffer (pH 8.0) containing 1mM DTT, 10% glycerol

### Purity

> 95% by SDS-PAGE

### Endotoxin level

< 1 EU per 1ug of protein (determined by LAL method)

### Tag

His-Tag

### Application

SDS-PAGE

### Storage Condition

Can be stored at +2C to +8C for 1 week. For long term storage, aliquot and store at -20C to -80C. Avoid repeated freezing and thawing cycles.

## BACKGROUND

---

### Description

Serine (or cysteine) proteinase inhibitor clade B (ovalbumin) member 5, also known as Maspin, is a tumor

# Recombinant human Serpin B5/Maspin protein

Catalog Number: ATGP0331

suppressor protein of serine proteinase inhibitor family. It plays an essential role in embryonic development through critical roles in cell adhesion. Also, it is present in normal breast and prostatic epithelial cells but downregulated in the respective carcinomas. Recombinant human Maspin, fused to His-tag at N-terminus, was expressed in E. coli and purified by using conventional chromatography.

## Amino acid Sequence

MGSSHHHHHHH SSGLVPRGSH MDALQLANSA FAVDLFKQLC EKEPLGNVLF SPICLSTLS LAQVGAKGDT ANEIGQVLHF  
ENVKDVPPGF QVTSDVNKL SSFYSLKLIK RLYVDKSLNL STEFISSTKR PYAKELETVD FKDKLEETKG QINNSIKDLT  
DGHFENILAD NSVNDQTKIL VVNAAYFVGK WMKKFPESET KECPRVNKT DTKPVQMMNM EATFCMGNID SINCKIMELP  
FQNKHLSMFI LLPKDVEDES TGLEKIEKQL NSESLSQWTN PSTMANAKVK LSIPKFKVEK MIDPKACLEN LGLKHIFSED  
TSDFSGMSET KGVALSNIH KVCLEITEDG GDSIEVPGAR ILQHKDELNA DHPFIYIIRH NKTRNIIFFG KFCSP

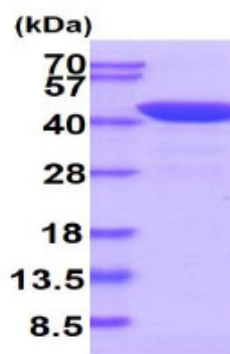
## General References

Lockett J., et al. (2006). J Cell Biochem. 97(4):651-60.

Khalkhali Ellis Z., et al. (2006). Clin Cancer Res. 12(24):7279-83.

## DATA

### SDS-PAGE



15% SDS-PAGE (3ug)

3ug by SDS-PAGE under reducing condition and visualized by coomassie blue stain.