

# Recombinant human BMP-3b/GDF-10 protein

Catalog Number: ATGP0336

## PRODUCT INFORMATION

---

### Expression system

E.coli

### Domain

369-478aa

### UniProt No.

P55107

### NCBI Accession No.

NP\_004953.1

### Alternative Names

Growth differentiation factor 10, GDF-10, Bone morphogenetic protein 3b [Precursor], Bone inducing protein, BMP-3b, BIP

## PRODUCT SPECIFICATION

---

### Molecular Weight

12.5 kDa (111aa) confirmed by MALDI-TOF

### Concentration

0.25mg/ml (determined by Bradford assay)

### Formulation

Liquid in. 10mM Sodium Citrate buffer (pH 3.5) containing 0.1M NaCl, 1mM DTT, 40% glycerol

### Purity

> 95% by SDS-PAGE

### Tag

Non-Tagged

### Application

SDS-PAGE

### Storage Condition

Can be stored at +2C to +8C for 1 week. For long term storage, aliquot and store at -20C to -80C. Avoid repeated freezing and thawing cycles.

## BACKGROUND

---

### Description

GDF10 (Growth differentiation factor 10) is a member of the bone morphogenetic protein (BMP) family and the TGF-beta superfamily. It is expressed in femur, brain, lung, skeletal, muscle, pancreas and testis, and it plays a role in head formation and may have multiple roles in skeletal morphogenesis. This group of proteins is characterized by a polybasic proteolytic processing site which is cleaved to produce a mature protein containing seven conserved cysteine residues. The members of this family are regulators of cell growth and differentiation

# Recombinant human BMP-3b/GDF-10 protein

Catalog Number: ATGP0336

in both embryonic and adult tissues. Recombinant GDF10 protein was expressed in E. coli and purified by using conventional chromatography techniques.

## Amino acid Sequence

MQWDEPRVCS RRYLKVDFAD IGWNEWIISP KSFDAYYCAG ACEFPMPKIV RPSNHATIQS IVRAVGIIPG IPEPCCVPDK  
MNSLGVLFLD ENRNVVLKVY PNMSVDTCAC R

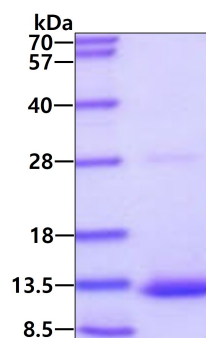
## General References

Cunningham NS., et al. (1995) Growth Factors. 12(2):99-109.  
Ducy P., et al. (2000) Kidney Int. 57(6):2207-14.

## DATA

---

### SDS-PAGE



3ug by SDS-PAGE under reducing condition and visualized by coomassie blue stain.