

# Recombinant human Glycogenin 1 protein

Catalog Number: ATGP0349

## PRODUCT INFORMATION

---

### Expression system

E.coli

### Domain

1-333aa

### UniProt No.

P46976

### NCBI Accession No.

AAH00033

### Alternative Names

Glycogenin, GYG1, GYG, Glycogenin1, GYG 1.

## PRODUCT SPECIFICATION

---

### Molecular Weight

41.2 kDa (365aa) confirmed by MALDI-TOF

### Concentration

1mg/ml (determined by Bradford assay)

### Formulation

Liquid in. 20mM Tris-HCl buffer (pH 8.0) containing 1mM DTT, 10% glycerol

### Purity

> 90% by SDS-PAGE

### Tag

His-T7-Tag

### Application

SDS-PAGE

### Storage Condition

Can be stored at +2C to +8C for 1 week. For long term storage, aliquot and store at -20C to -80C. Avoid repeated freezing and thawing cycles.

## BACKGROUND

---

### Description

Glycogenin 1 is an enzyme involved in glycogen biosynthesis. Glycogenin 1 is important for the function of self-glycosylates, via an inter-subunit mechanism, to form an oligosaccharide primer that serves as substrate for glycogen synthase. Also, it plays a role in regulating glycogen metabolism and the attainment of maximal glycogen levels in skeletal muscle. Recombinant human Glycogenin 1, fused to His-T7-tag at N-terminus, was expressed in E. coli and purified by using conventional chromatography techniques.

# Recombinant human Glycogenin 1 protein

Catalog Number: ATGP0349

## Amino acid Sequence

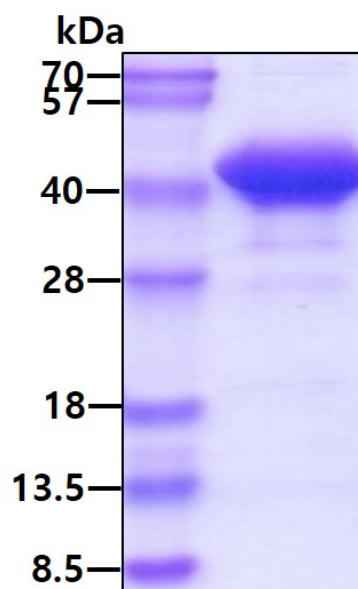
MHHHHHHMAS MTGGQQMGRD LYDDDDDKDRW GSMTDQAFVT LTTNDAYAKG ALVLGSSLKQ HRTTRRLVVL  
ATPQVSDSMR KVLETVFDEV IMVDVLDSGD SAHLTLMKRP ELGVTCLKH CWSLTQYSKC VFMDADTLVL ANIDDLFDRE  
ELSAAPDPGW PDCFNSGVFV YQPSVETYNQ LLHLASEQGS FDGGDQGILN TFFSSWATTD IRKHLPIIYN LSSISIYSYL  
PAFKVFGASA KVVHFLGRVK PWNYYTDPKT KSVKSEAHDP NMTHPEFLIL WWNIFTTNVL PLLQQFGLVK DTCSYVNVED  
VSGAISHLSL GEIPAMAQPF VSSEERKERW EQGQADYMGA DSFDNIKRKL DTYLQ

## General References

Yamashita H., et al. (1999) J Biol Chem. 274(42):29897-904.  
Declercg JP., et al. (2001) J Mol Biol. 311(4):751-9.

## DATA

### SDS-PAGE



3 $\mu$ g by SDS-PAGE under reducing condition and visualized by coomassie blue stain.