

Recombinant human TC21/RRAS2 protein

Catalog Number: ATGP0396

PRODUCT INFORMATION

Expression system

E.coli

Domain

1-201aa

UniProt No.

P62070

NCBI Accession No.

NP_036382

Alternative Names

Ras-related protein R-Ras2, Related RAS viral (r-ras) oncogene homolog 2, Ras-like protein TC21, Teratocarcinoma oncogene, TC21

PRODUCT SPECIFICATION

Molecular Weight

25.2 kDa (221aa) confirmed by MALDI-TOF

Concentration

0.5mg/ml (determined by Bradford assay)

Formulation

Liquid in. 20mM Tris-HCl buffer (pH 8.0) containing 1mM DTT, 10% glycerol, 2mM EDTA

Purity

> 95% by SDS-PAGE

Tag

His-Tag

Application

SDS-PAGE

Storage Condition

Can be stored at +2C to +8C for 1 week. For long term storage, aliquot and store at -20C to -80C. Avoid repeated freezing and thawing cycles.

BACKGROUND

Description

RAS viral (r-ras) oncogene homolog 2 isoform a, also known as RRAS2, belongs to the Ras like GTPase family that cycle between GTP-bound active and GDP-bound inactive states at the cytoplasmic face of the plasma membrane. It is implicated in the pathogenesis of human cancers. Thus, overexpression of active RRAS2 in EpH4 cells induces tumorigenicity through the phosphoinositide 3-kinase, p38 MAPK, and mTOR pathways, and these cells lose their sensitivity to the normal growth inhibitory role of TGF-beta. Recombinant human RRAS2, fused to

Recombinant human TC21/RRAS2 protein

Catalog Number: ATGP0396

His-tag at N-terminus, was expressed in E. coli and purified by using conventional chromatography techniques.

Amino acid Sequence

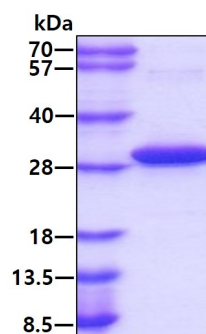
<MGSSHHHHHH SSGLVPRGSH> MAAAGWRDGS GQEKYRLVVV GGGVVGKSAL TIQFIQSYFV TDYDPTIEDS
YTKQCVIDDR AARLDILDTA GQEEFGAMRE QYMRTGEGFL LVFSVTDRGS FEEIYKFQRQ ILRVKDRDEF PMILIGNKAD
LDHQRQVTQE EGQQLARQLK VTYMEASAKI RMNVDQAFHE LVRVIRKFQE QECPPSPEPT RKEKD KKGCH C

General References

Erdogan M., et al. (2007) J Biol Chem. 282(38):27713-20.
Movilla N., et al. (1999) Oncogene. 18(43):5860-9.

DATA

SDS-PAGE



3 μ g by SDS-PAGE under reducing condition and visualized by coomassie blue stain