

Recombinant human FBPase 1 protein

Catalog Number: ATGP0408

PRODUCT INFORMATION

Expression system

E.coli

Domain

1-338aa

UniProt No.

P09467

NCBI Accession No.

NP_000498.2

Alternative Names

FBPase1, FBP, FBP1, D fructose 1 6 bisphosphate 1 phosphohydrolase 1, EC 3.1.3.11, FBP 1, FBPase 1, Fructose 1 6 bisphosphatase 1 Fructose bisphosphatase 1, Growth inhibiting protein 17, Liver fructose bisphosphatase.

PRODUCT SPECIFICATION

Molecular Weight

39.0 kDa (358aa) confirmed by MALDI-TOF

Concentration

1mg/ml (determined by Bradford assay)

Formulation

Liquid in. 20mM Tris-HCl buffer (pH 8.0) containing 1mM DTT, 10% glycerol

Purity

> 90% by SDS-PAGE

Tag

His-Tag

Application

SDS-PAGE

Storage Condition

Can be stored at +2C to +8C for 1 week. For long term storage, aliquot and store at -20C to -80C. Avoid repeated freezing and thawing cycles.

BACKGROUND

Description

Fructose-1, 6-bisphosphatase 1 (FBP1) is a gluconeogenesis regulatory enzyme, catalyzes the hydrolysis of fructose 1, 6-bisphosphate to fructose 6-phosphate and inorganic phosphate. Fructose-1, 6-diphosphatase deficiency is associated with hypoglycemia and metabolic acidosis. Recombinant FBP1 protein, fused to His-tag at N-terminus, was expressed in E. coli and purified by using conventional chromatography techniques.

Recombinant human FBPase 1 protein

Catalog Number: ATGP0408

Amino acid Sequence

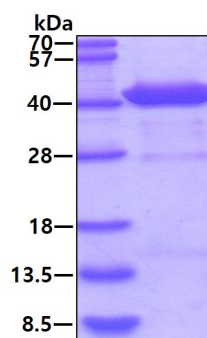
<MGSSHHHHH SSGLVPRGSH> MADQAPFDTD VNTLTRFVME EGRKARGTGE LTQLLSLCT AVKAISSAVR
KAGIAHLYGI AGSTNVTGDQ VKKLDVLSND LVMNMLKSSF ATCVLVSEED KHAIIVEPEK RGKYVVC FDP LDGSSNIDCL
VSVGTFIGIY RKKSTDEPSE KDALQPGRNL VAAGYALYGS ATMLVLAMDC GVNCFMLDPA IGEFILVDKD VKIKKKGKIY
SLNEGYARDF DPAVTEYIQR KKFPPDNSAP YGARYVGS MV ADVHRTLVIY G GIFLYPANKK SPNGKLRLLY ECNPMAYVME
KAGGMATTGK EAVLDVIPTD IHQRAPVILG SPDDVLEFLK VYEKHS AQ

General References

Rabenhorst u., et al. (2009) Hepatology. 50(4):1121-9.
Hirota K., et al. (2008) Nature. 456(7218):130-4.

DATA

SDS-PAGE



3 μ g by SDS-PAGE under reducing condition and visualized by coomassie blue stain.