

Recombinant human p23/PTGES3 protein

Catalog Number: ATGP0418

PRODUCT INFORMATION

Expression system

E.coli

Domain

1-160aa

UniProt No.

Q15185

NCBI Accession No.

NP_006592

Alternative Names

PTGES3, cPGES, P23, TEBP, HSP90 co-chaperone, Sid 3177, Co chaperone p23, Hsp90 co chaperone, Cytosolic prostaglandin E2 synthase, Progesterone receptor complex, Progesterone receptor complex p23, Prostaglandin E synthase 3, PTGES 3, Telomerase binding protein p23, unactive progesterone receptor 23 kD,

PRODUCT SPECIFICATION

Molecular Weight

18.6 kDa (160aa) confirmed by MALDI-TOF

Concentration

0.5mg/ml (determined by Bradford assay)

Formulation

Liquid in. 20mM Tris-HCl buffer (pH 8.0) containing 1mM DTT, 10% glycerol

Purity

> 95% by SDS-PAGE

Tag

Non-Tagged

Application

SDS-PAGE

Storage Condition

Can be stored at +2C to +8C for 1 week. For long term storage, aliquot and store at -20C to -80C. Avoid repeated freezing and thawing cycles.

BACKGROUND

Description

Prostaglandin E synthase 3 (PTGES3), also known as P23 or TEBP (Telomerase binding protein p23), is a ubiquitously expressed protein that functions as a cochaperone and plays an important role in signal transduction. This protein is a molecular chaperone that localizes to genomic response elements in a hormone-dependent manner and disrupts receptor-mediated transcriptional activation, by promoting disassembly of

Recombinant human p23/PTGES3 protein

Catalog Number: ATGP0418

transcriptional regulatory complexes. Recombinant PTGES3 protein was expressed in *E. coli* and purified by using conventional chromatography techniques.

Amino acid Sequence

MQPASAKWYD RRDYVFIEFC VEDSKDVNVN FEKSKLTFSC LGGSDNFKHL NEIDLFHCID PNDSKHKRTD RSILCCLRKG
ESGQSWPRLT KERAKLNWLS VDFNNWKDWE DDSDEDMSNF DRFSEMMNNM GGDEDVDLPE VDGADDDSDQ
SDDEKMPDLE

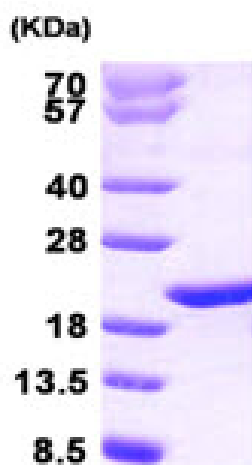
General References

Hawkins GA., et al. (2009) *J Allergy Clin Immunol.* 123(6):1376-83.e7

Nuttinck F., et al. (2008) *Reproduction.* 135(5):593-603.

DATA

SDS-PAGE



3ug by SDS-PAGE under reducing condition and visualized by coomassie blue stain.

15% SDS-PAGE (3ug)