

Recombinant human Protein C Inhibitor/SERPINA5 protein

Catalog Number: ATGP0419

PRODUCT INFORMATION

Expression system

E.coli

Domain

20-406aa

UniProt No.

P05154

NCBI Accession No.

AAH08915.1

Alternative Names

Serpin peptidase inhibitor, clade A, member 5, PAI3, PCI, PROCI, Plasma serine protease inhibitor, Acrosomal serine protease inhibitor, Plasminogen activator inhibitor 3, Protein C inhibitor, SERPINA5, PLANH3, Serine proteinase inhibitor clade A (alpha-1 antiproteinase, antitrypsin) member 5, Cysteine proteinase inhibitor clade A (alpha-1 antiproteinase, antitrypsin) member 5

PRODUCT SPECIFICATION

Molecular Weight

45.9 kDa (408aa) confirmed by MALDI-TOF

Concentration

0.5mg/ml (determined by Bradford assay)

Formulation

Liquid in. 20mM MES buffer (pH 6.0) containing 150mM NaCl, 10% glycerol

Purity

> 90% by SDS-PAGE

Tag

His-Tag

Application

SDS-PAGE

Storage Condition

Can be stored at +2C to +8C for 1 week. For long term storage, aliquot and store at -20C to -80C. Avoid repeated freezing and thawing cycles.

BACKGROUND

Description

Serpin A5, also known as PCI (Protein C Inhibitor) or PAI3 (plasminogen activator inhibitor 3), is a member of the serpin serine proteinase inhibitor family. This protein inhibits plasminogen activators as well as activated protein C. Serpin A5 is secreted in plasma, but is also expressed in liver. Serpin A5 is involved in cell inflammation,

Recombinant human Protein C Inhibitor/SERPINA5 protein

Catalog Number: ATGP0419

proliferation, apoptosis, tumour cell migration, invasion, and metastasis. Recombinant Serpin A5 protein, fused to His-tag at N-terminus, was expressed in *E. coli* and purified by using conventional chromatography techniques.

Amino acid Sequence

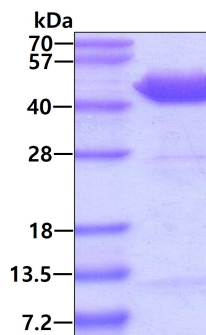
<MGSSHHHHHH SSGLVPRGSH M>HRHHPREMK KRVEDLHVGA TVAPSSRRDF TFDLYRALAS AAPSQNIFFS
PVSISMSLAM LSLGAGSSTK MQILEGLGLN LQKSSEKELH RGFQQLLQEL NQPRDGFQLS LGNALFTDLV VDLQDTFVSA
MKTLYLADTF PTNFRDSAGA MKQINDYVAK QTKGKIVDLL KNLDSNAVVI MVNYIFFKAK WETSFNHKGT QEQDFYVTSE
TVVRVPMMSR EDQYHYLLDR NLSCRVVGVP YQGNATALFI LPSEGKMQQV ENGLSEKTLR KWLKMFKKRQ LELYLPKFSI
EGSYQLEKVL PSLGISNVFT SHADLSGISN HSNIQVSEMV HKAVVEVDES GTRAAAATGT IFTFRSARLN SQRLVFNRPF
LMFIVDNNIL FLGKVNRP

General References

Han MH., et al. (2008) *Nature*. 451(7182):1076-81.
Li W., et al. (2008) *J Biol Chem*. 283(51):36039-45.

DATA

SDS-PAGE



3ug by SDS-PAGE under reducing condition and visualized by coomassie blue stain.