

Recombinant human Glutaredoxin 2/GLRX2 protein

Catalog Number: ATGP0436

PRODUCT INFORMATION

Expression system

E.coli

Domain

20-164aa

UniProt No.

Q9NS18

NCBI Accession No.

NP_932066

Alternative Names

GLRX2, GRX2, CGI133, Glutaredoxin (thioltransferase) 2

PRODUCT SPECIFICATION

Molecular Weight

17 kDa (154aa) confirmed by MALDI-TOF

Concentration

0.5mg/ml (determined by Bradford assay)

Formulation

Liquid in. 20mM Tris-HCl buffer (pH 8.0) containing 0.1mM PMSF, 10% glycerol

Purity

> 90% by SDS-PAGE

Tag

His-Tag

Application

SDS-PAGE

Storage Condition

Can be stored at +2C to +8C for 1 week. For long term storage, aliquot and store at -20C to -80C. Avoid repeated freezing and thawing cycles.

BACKGROUND

Description

Glutaredoxin-2, as known as GRX2, multifunctional enzyme with glutathione-dependent oxidoreductase, glutathione peroxidase and glutathione S-transferase (GST) activity. This protein is localized both in the mitochondria and nucleus. It has anti-apoptotic activity by preventing cardiolipin oxidation and cytochrome c release. GRX2 exhibited 36% identity with GRX1 and had a disulfide active center containing the Cys-Ser-Tyr-Cys motif. Recombinant human Glutaredoxin 2, fused to His-tag at C-terminus, was expressed in E. coli and purified by using conventional chromatography.

Recombinant human Glutaredoxin 2/GLRX2 protein

Catalog Number: ATGP0436

Amino acid Sequence

MSAGWLDRAA GAAGAAAAAA SGMESNTSSS LENLATAPVN QIQETISDNC VVIFSKTSCS YCTMAKCLFH DMNVNYKVVE
LDLLEYGNQF QDALYKMTGE RTVPRIFVNG TFIGGATDTH RLHKEGKLLP LVHQCYLKKS KRKEFQ<LEHH HHHH>

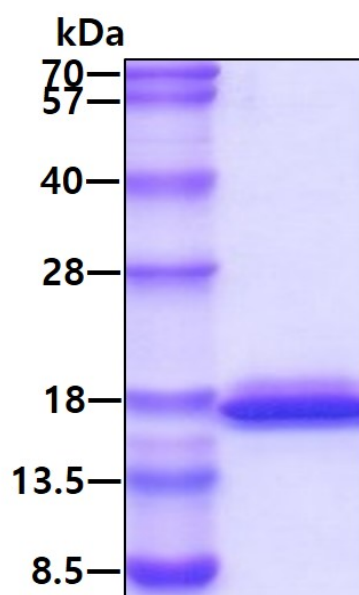
General References

Elliott SJ., et al. (2009) *Biochemistry*. 948(18):3813-5.

Das DK., et al. (2008) *J Mol Cell Cardiol*. 44(2):252-60

DATA

SDS-PAGE



3ug by SDS-PAGE under reducing condition and visualized by coomassie blue stain.