

Recombinant human BAALC protein

Catalog Number: ATGP0438

PRODUCT INFORMATION

Expression system

E.coli

Domain

1-145aa

UniProt No.

Q8WXS3

NCBI Accession No.

NP_079088

Alternative Names

Brain and acute leukemia cytoplasmic isoform 1, Brain and acute leukemia, cytoplasmic isoform 1 Brain and acute leukemia cytoplasmic, FLJ12015.

PRODUCT SPECIFICATION

Molecular Weight

17.7 kDa (165aa) confirmed by MALDI-TOF

Concentration

0.5mg/ml (determined by Bradford assay)

Formulation

Liquid in. 20mM Tris-HCl buffer (pH 8.0) containing 1mM DTT, 20% glycerol, 2mM EDTA

Purity

> 95% by SDS-PAGE

Tag

His-Tag

Application

SDS-PAGE

Storage Condition

Can be stored at +2C to +8C for 1 week. For long term storage, aliquot and store at -20C to -80C. Avoid repeated freezing and thawing cycles.

BACKGROUND

Description

Brain and acute leukemia, cytoplasmic (BAALC) localizes to both the membrane and the cytoplasm and exists as multiple alternatively spliced isoforms. Expressed by hematopoietic and neural cells, BAALC interacts with CaMKIIalpha and is thought to play a role in synaptic function at postsynaptic lipid rafts. Overexpression of BAALC concomitant predict adverse clinical outcome and may define important risk factor in cytogenetically normal acute myeloid leukemia (AML). Recombinant human BAALC, fused to His-tag at N-terminus, was

Recombinant human BAALC protein

Catalog Number: ATGP0438

expressed in E. coli and purified by using conventional chromatography techniques.

Amino acid Sequence

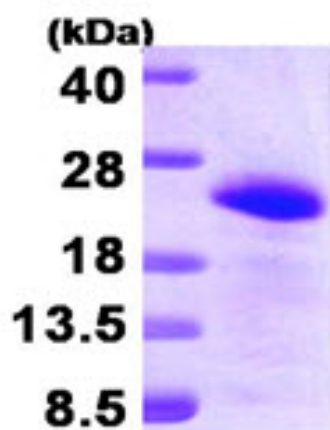
MGSSHHHHHH SSGLVPRGSH MGCGRSRADA IEPRIYESWT RETESTWLTY TDSDAPPSAA APDSGPEAGG
LHSGMLEDGL PSNGVPRSTA PGGIPNPEKK TNCETQCPNP QSLSSGPLTQ KQNGLQTTEA KRDAKRMPAK EVTINVTDSI
QQMDRSRRIT KNCVN

General References

Tanner SM., et al. (2001) Proc Natl Acad Sci U S A. 98(24):13901-6.
Satoskar AA., et al. (2005) Gene Expr Patterns. 5(4):463-73.

DATA

SDS-PAGE



3ug by SDS-PAGE under reducing condition and visualized by coomassie blue stain.

15% SDS-PAGE (3ug)