

Recombinant human Annexin A2/ANXA2 protein

Catalog Number: ATGP0467

PRODUCT INFORMATION

Expression system

E.coli

Domain

1-339aa

UniProt No.

P07355

NCBI Accession No.

NP_001002857.1

Alternative Names

Annexin II, Annexin-2, Calpactin I heavy chain, Calpactin-1 heavy chain, Chromobindin-8, Lipocortin II, Placental anticoagulant protein IV (PAP-IV), Protein I, p36, ANX2, ANX2L4, CAL1H, LPC2D

PRODUCT SPECIFICATION

Molecular Weight

42.8 kDa (376aa) confirmed by MALDI-TOF

Concentration

0.5mg/ml (determined by Bradford assay)

Formulation

Liquid in. 20mM Tris-HCl buffer (pH 8.0) containing 20% glycerol 0.1M NaCl

Purity

> 95% by SDS-PAGE

Tag

His-Tag

Application

SDS-PAGE

Storage Condition

Can be stored at +2C to +8C for 1 week. For long term storage, aliquot and store at -20C to -80C. Avoid repeated freezing and thawing cycles.

BACKGROUND

Description

Annexin A2 belongs to a family of calcium-dependent membrane and phospholipid binding proteins. It plays a role in the regulation of cellular growth and in signal transduction pathways. This protein functions as an autocrine factor which heightens osteoclast formation and bone resorption. Recombinant Annexin A2 protein was expressed in E. coli and purified by using conventional chromatography techniques.

Recombinant human Annexin A2/ANXA2 protein

Catalog Number: ATGP0467

Amino acid Sequence

<MRGSHHHHHH GMASMTGGQQ MGRDLYDDDD KDRWGSH>MST VHEILCKLSL EGDHSTPPSA YGSVKAYTNF
DAERDALNIE TAIKTKGVDE VTIVNILTNR SNAQRQDIAF AYQRRTKKEL ASALKSALSG HLETVILGLL KTPAQYDASE
LKASMKGLGT DEDSLIEIIC SRTNQELQEI NRVYKEMYKT DLEKDIISDT SGDFRKL MVA LAKGRR AEDG SVIDYELIDQ
DARDLYDAGV KRKGTDV PKW ISIMTERSVP HLQKVFDRYK SYSPYDMLES IRKEVKGDLE NAFLNLVQCI QNKPLYFADR
LYDSMKGKGT RDKVLIRIMV SRSEVDMLKI RSEFKRKYGK SLYYYIQQDT KGDYQKALLY LCGGDD

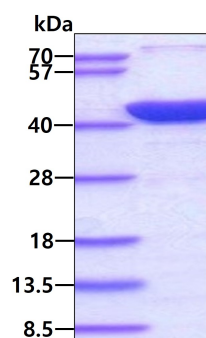
General References

Emans N., et al. (1993) J. Cell Biol. 120(6):1357-69

Zhao P., et al. (2010) Cancer Sci. 101(2):387-95.

DATA

SDS-PAGE



3 μ g by SDS-PAGE under reducing condition and visualized by coomassie blue stain.