

Recombinant human BAG1 protein

Catalog Number: ATGP0508

PRODUCT INFORMATION

Expression system

E.coli

Domain

1-230aa

UniProt No.

Q99933

NCBI Accession No.

NP_001165886

Alternative Names

BAG cochaperone 1, BCL2 associated athanogene, BCL2 associated athanogene 1, HAP, RAP46

PRODUCT SPECIFICATION

Molecular Weight

25.9 kDa (230aa) confirmed by MALDI-TOF

Concentration

1mg/ml (determined by Bradford assay)

Formulation

Liquid in. 20mM Tris-HCl buffer (pH 7.5) containing 100mM NaCl, 10% glycerol

Purity

> 85% by SDS-PAGE

Tag

Non-Tagged

Application

SDS-PAGE

Storage Condition

Can be stored at +2C to +8C for 1 week. For long term storage, aliquot and store at -20C to -80C. Avoid repeated freezing and thawing cycles.

BACKGROUND

Description

BCL2-associated athanogene, also known as BAG1, is a member of the Bcl-2 family of proteins that play varied stimulatory or inhibitory roles in the regulation of programmed cell death. This functions in conjunction with Bcl-2 to inhibit apoptosis. Also, BAG1 has been implicated in age related neurodegenerative diseases as Alzheimer's. It is localized to the cytosol, nucleus or both. Recombinant human BAG1 was expressed in E. coli and purified by using conventional chromatography techniques.

Recombinant human BAG1 protein

Catalog Number: ATGP0508

Amino acid Sequence

MNRSQEVTRD EESTRSEEVV REEMAAAGLT VTVTHSNEKH DLHVTSQQGS SEPVVQDLAQ VVEEVIGVPQ SFQKLIFKGK
SLKEMETPLS ALGIQDGCRV MLIGKKNSPQ EEVELKCLKH LEKSVEKIAD QLEELNKELT GIQQGFLPKD LQAEALCKLD
RRVKATIEQF MKILEEIDTL ILPENFKDSR LKRKGLVKKV QAFLAECDTV EQNICQETER LQSTNFALAE

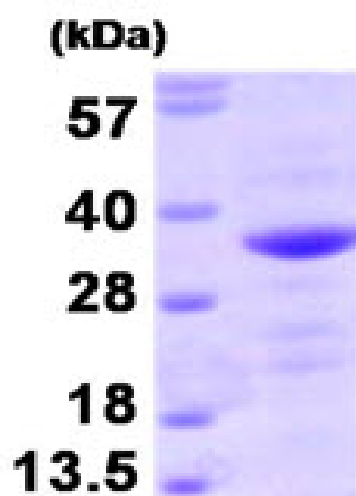
General References

Wang HG., et al. (1996) Proc Natl Acad Sci U S A. 93(14):7063-8.

Takayama S., et al. (1995) Cell. 80(2):279-84.

DATA

SDS-PAGE



3ug by SDS-PAGE under reducing condition and visualized by coomassie blue stain.

15% SDS-PAGE (3ug)