

Recombinant human HMGN1 protein

Catalog Number: ATGP0515

PRODUCT INFORMATION

Expression system

E.coli

Domain

1-100aa

UniProt No.

P05114

NCBI Accession No.

NP_004956.5

Alternative Names

Non-histone chromosomal protein HMG-14, HMG14, GC104230, Non-histone chromosomal protein HMG-14 FLJ27265, FLJ31471, High mobility group (nonhistone chromosomal) protein 14, High mobility group nucleosome binding 1, High mobility group nucleosome binding domain 1, High mobility group nucleosome binding domain containing protein 1, High mobility group protein 14, HMG 14 HMGN 1, HMGN1, MGC104230, MGC117425, Nonhistone chromosomal protein HMG 14, Nonhistone chromosomal protein HMG14.

PRODUCT SPECIFICATION

Molecular Weight

11.7 kDa (108aa) confirmed by MALDI-TOF

Concentration

0.5mg/ml (determined by BCA assay)

Formulation

Liquid in. 20mM Tris-HCl buffer (pH 8.0) containing 20% glycerol, 0.1M NaCl, 0.1mM PMSF

Purity

> 95% by SDS-PAGE

Tag

His-Tag

Application

SDS-PAGE

Storage Condition

Can be stored at +2C to +8C for 1 week. For long term storage, aliquot and store at -20C to -80C. Avoid repeated freezing and thawing cycles.

BACKGROUND

Description

HMGN1, also known as non-histone chromosomal protein HMG-14, belongs to the HMGN family. Chromosomal protein HMGN1 binds to the inner side of the nucleosomal DNA, potentially altering the interaction between the

Recombinant human HMGN1 protein

Catalog Number: ATGP0515

DNA and the histone octamer. This protein may be involved in the process that maintains transcribable genes in a unique chromatin conformation. Recombinant human HMGN1 protein was expressed in *E. coli* and purified by using conventional chromatography techniques.

Amino acid Sequence

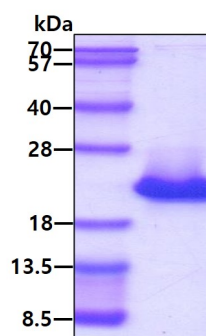
MPKRKVSSAE GAAKEEPKRR SARLSAKPPA KVEAKPKKAA AKDKSSDKKV QTKGKRGAKG KQAEVANQET KEDLPAENGE
TKTEESPASD EAGEKEAKSD LE<HHHHHH>

General References

Landsman D. et al, (1989) J Biol Chem. 264(6):3421-7

DATA

SDS-PAGE



3 μ g by SDS-PAGE under reducing condition and visualized by coomassie blue stain.