

Recombinant human MAGOH protein

Catalog Number: ATGP0538

PRODUCT INFORMATION

Expression system

E.coli

Domain

1-146aa

UniProt No.

P61326

NCBI Accession No.

NP_002361

Alternative Names

Protein mago nashi homolog, MAGOH1, MAGOHA, Protein mago nashi homolog Mago nashi homolog proliferation associated (Drosophila), Mago nashi protein homolog.

PRODUCT SPECIFICATION

Molecular Weight

18.2 kDa (154aa) confirmed by MALDI-TOF

Concentration

0.5mg/ml (determined by Bradford assay)

Formulation

Liquid in. 20mM Tris-HCl buffer (pH 8.0) containing 2mM DTT, 0.1M NaCl, 20% glycerol

Purity

> 90% by SDS-PAGE

Tag

His-Tag

Application

SDS-PAGE

Storage Condition

Can be stored at +2C to +8C for 1 week. For long term storage, aliquot and store at -20C to -80C. Avoid repeated freezing and thawing cycles.

BACKGROUND

Description

MAGOH, the human homolog of *Drosophila mago nashi*, is required for embryo development. MAGOH is ubiquitously expressed in adult tissues. In mammals, mRNA expression is not limited to the germ plasm, but is expressed ubiquitously in adult tissues and can be induced by serum stimulation of quiescent fibroblasts. Recombinant human MAGOH protein, fused to His-tag at C-terminus, was expressed in *E. coli* and purified by using conventional chromatography techniques.

Recombinant human MAGOH protein

Catalog Number: ATGP0538

Amino acid Sequence

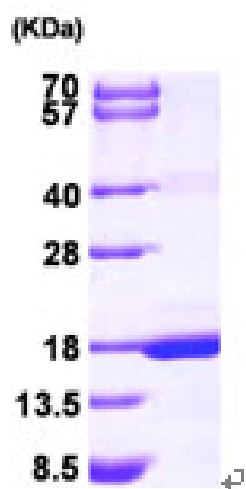
MESDFYLRYV VGHKGKFGHE FLEFEFRPDG KLRYANNSNY KNDVMIRKEA YVHKSVMEEEL KRIIDDSEIT KEDDALWPPP
DRVGRQLEI VIGDEHISFT TSKIGSLIDV NQSKDPEGLR VFYYLVQDLK CLVFLSLIGLH FKIKPILEHH HHHH

General References

Gehring NH., et al. (2009) Cell. 137(3):536-48.
Chamieh H., et al. (2008) Nat Struct Mol Biol. 15(1):85-93.

DATA

SDS-PAGE



3ug by SDS-PAGE under reducing condition and visualized by coomassie blue stain.

15% SDS-PAGE (3ug)