

# Recombinant human TRAF-1 protein

Catalog Number: ATGP0571

## PRODUCT INFORMATION

---

### Expression system

E.coli

### Domain

266-416aa

### UniProt No.

Q13077

### NCBI Accession No.

NP\_005649

### Alternative Names

TNF receptor-associated factor 1, EBI6, TNF receptor-associated factor 1 4732496E14Rik, EBV induced protein 6, Epstein-Barr virus-induced protein 6, Tnf receptor associated factor 1, TRAF 1.

## PRODUCT SPECIFICATION

---

### Molecular Weight

19.5 kDa (172aa) confirmed by MALDI-TOF

### Concentration

0.5mg/ml (determined by Bradford assay)

### Formulation

Liquid in. 20mM Tris-HCl buffer (pH 8.0) containing 20% glycerol, 0.1M NaCl, 1mM DTT

### Purity

> 95% by SDS-PAGE

### Tag

His-Tag

### Application

SDS-PAGE

### Storage Condition

Can be stored at +2C to +8C for 1 week. For long term storage, aliquot and store at -20C to -80C. Avoid repeated freezing and thawing cycles.

## BACKGROUND

---

### Description

TRAF1, also known as TNF receptor-associated factor 1, belongs to TNF receptor superfamily. This protein and TRAF2 form a heterodimeric complex, which is required for TNF-alpha-mediated activation of MAPK8/JNK and NF-kappaB. The complex also interacts with inhibitor-of-apoptosis proteins (IAPs), and thus mediates the anti-apoptotic signals from TNF receptors. Recombinant human TRAF1 protein, fused to His-tag at N-terminus, was expressed in E. coli and purified by using conventional chromatography techniques.

## Recombinant human TRAF-1 protein

Catalog Number: ATGP0571

### Amino acid Sequence

MGSSHHHHHH SSGLVPRGSH MDGTFLWKIT NVTRRCHESA CGRTVSLFSP AFYTAKYGYK LCLRLYLNGD GTGKRTHLSL  
FIVIMRGEYD ALLPWPFRNK VTFMLLDQNN REHAIDAFRP DLSSASFQRP QSETNVASGC PLFFPLSKLQ SPKHAYVKDD  
TMFLKCIVET ST

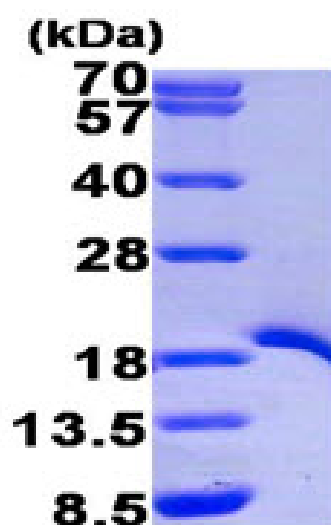
### General References

Ansieau S. et al. (1996) Proc Natl Acad Sci u S A. 93(24):14053-8.

Leo E, et al. (2001) J Biol Chem. 276(11):8087-93

## DATA

### SDS-PAGE



3ug by SDS-PAGE under reducing condition and visualized by coomassie blue stain.

15% SDS-PAGE (3ug)