

# Recombinant human CERT1 protein

Catalog Number: ATGP0579

## PRODUCT INFORMATION

---

### Expression system

E.coli

### Domain

347-598aa

### UniProt No.

Q9Y5P4

### NCBI Accession No.

NP\_112729

### Alternative Names

Ceramide transporter 1, Collagen type IV alpha-3-binding protein, Goodpasture antigen-binding protein, GPBP, START domain-containing protein 11, StARD11, StAR-related lipid transfer protein 11, CERT, COL4A3BP

## PRODUCT SPECIFICATION

---

### Molecular Weight

32.9 kDa (290aa) confirmed by MALDI-TOF

### Concentration

0.5mg/ml (determined by Bradford assay)

### Formulation

Liquid in. 20mM Tris-HCl buffer (pH 8.0) containing 10% glycerol 0.1M NaCl

### Purity

> 95% by SDS-PAGE

### Tag

His-Tag

### Application

SDS-PAGE

### Storage Condition

Can be stored at +2C to +8C for 1 week. For long term storage, aliquot and store at -20C to -80C. Avoid repeated freezing and thawing cycles.

## BACKGROUND

---

### Description

CERT is a kinase that specifically phosphorylates the N-terminal region of the non-collagenous domain of the alpha 3 chain of type IV collagen, known as the Goodpasture antigen. Goodpasture disease is the result of an autoimmune response directed at this antigen. One isoform of this protein is also involved in ceramide intracellular transport. Recombinant human CERT protein, fused to His-tag at N-terminus, was expressed in E. coli and purified by using conventional chromatography techniques.

## Recombinant human CERT1 protein

Catalog Number: ATGP0579

### Amino acid Sequence

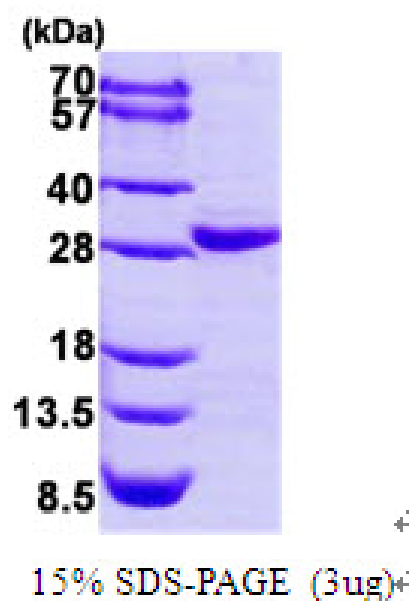
<MRGSHHHHHH GMASMTGGGQ MGRDLYDDDD KDRWAGSM>LH WPTSLPSGDA FSSVGTHRFV QKVEEMVQNH  
MTYSLQDVGG DANWQLVVEE GEMKVYRREV EENGIVLDPL KATHAVKGVV GHEVCNYFWN VDVRNDWETT  
IENFHVVETL ADNAIIIYQT HKRVWPASQR DVLYLSVIRK IPALTENDPE TWIVCNFSVD HDSAPLNNRC VRAKINVAMI  
CQTLVSPPEG NQEISRDNIL CKITYVANVN PGGWAPASVL RAVAKREYPK FLKRFTSYVQ EKTAGKPILF

### General References

Turner N., et al. (1992) J Clin Invest 89(2):592-601.

## DATA

### SDS-PAGE



3ug by SDS-PAGE under reducing condition and visualized by coomassie blue stain.