

Recombinant human Lactate Dehydrogenase B/LDHB protein

Catalog Number: ATGP0616

PRODUCT INFORMATION

Expression system

E.coli

Domain

1-334aa

UniProt No.

P07195

NCBI Accession No.

NP_002291

Alternative Names

Renal carcinoma antigen NY-REN-46, Lactate dehydrogenase B, L-lactate dehydrogenase B chain, LDH-H, LDH-B, LDH heart subunit

PRODUCT SPECIFICATION

Molecular Weight

38.8 kDa (354aa) confirmed by MALDI-TOF

Concentration

1mg/ml (determined by Bradford assay)

Formulation

Liquid in. 20mM Tris-HCl buffer (pH 8.0) containing 10% glycerol 1mM DTT

Purity

> 95% by SDS-PAGE

Endotoxin level

< 1 EU per 1ug of protein (determined by LAL method)

Biological Activity

Specific activity is > 300unit/mg, in which one unit will convert 1.0 umole of pyruvate to L-lactate and beta-NAD per minute at pH 7.5 at 37C.

Tag

His-Tag

Application

SDS-PAGE, Enzyme Activity

Storage Condition

Can be stored at +2C to +8C for 1 week. For long term storage, aliquot and store at -20C to -80C. Avoid repeated freezing and thawing cycles.

Recombinant human Lactate Dehydrogenase B/LDHB protein

Catalog Number: ATGP0616

BACKGROUND

Description

LDHB, also known as L-lactate dehydrogenase B chain, is a member of the lactate dehydrogenase family. It is an oxidoreductase which catalyses the interconversion of pyruvate and lactate with concomitant interconversion of NADH and NAD⁺. As this protein can also catalyze the oxidation of hydroxybutyrate, it is occasionally called Hydroxybutyrate Dehydrogenase (HBD). The LDH family consists of three members, LDH-A, LDH-B and LDH-C. LDHs function as powerful markers for germ cell tumors. Recombinant human LDHB protein, fused to His-tagging at N-terminus, was expressed in *E. coli* and purified by using conventional chromatography techniques.

Amino acid Sequence

<MGSSHHHHHH SGLVPRGSH> MATLKEKLI A PVAEEEEATVP NNKITVVGVG QVGMACAISI LGKSLADELA LVDVLEDKLG
GEMMDLQHGS LFLQTPKIVA DKDYSVTANS KIVVVTAGVR QQEGESRLNL VQRNVNVFKF IIPQIVKYSP DCIIIVVSNP
VDILTYVTWK LSGLPKHRVI GSGCNLDSAR FRYLMAEKL G IHPSSCHGWI LGEHGDSSVA VWSGVNVAGV SLQELNPEMG
TDNDSENWKE VHKMVVESAY EVIKLKG YTN WAIGLSVADL IESMLKNLSR IHPVSTMVKG MYGIENEVFL SLPCILNARG
LTSVINQKLG DDEVAQLKKS ADTLWDIQKD LKDL

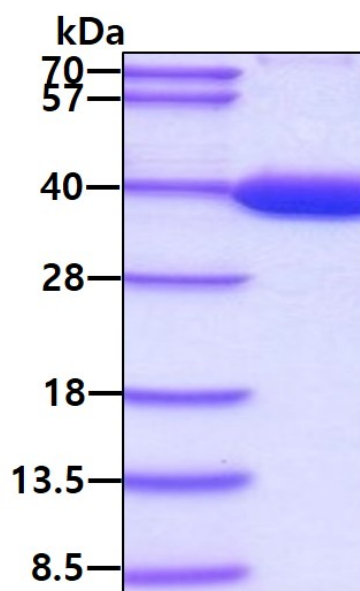
General References

Read JA., et al. (2001) *Proteins*. 43(2):175-85.

Butt AA., et al. (2002) *AIDS*. 12(7):317-21.

DATA

SDS-PAGE



3 μ g by SDS-PAGE under reducing condition and visualized by coomassie blue stain.