

# Recombinant mouse alpha-Synuclein protein

Catalog Number: ATGP0619

## PRODUCT INFORMATION

---

**Expression system**

E.coli

**Domain**

1-140aa

**UniProt No.**

O55042

**NCBI Accession No.**

NP\_033247

**Alternative Names**

alpha-Synuclein, Snca, Syn, alpha-Synuclein, NACP, Non-A beta component of AD amyloid, Non-A4 component of amyloid precursor

## PRODUCT SPECIFICATION

---

**Molecular Weight**

14.4 kDa (140aa) confirmed by MALDI-TOF

**Concentration**

1mg/ml (determined by BCA assay)

**Formulation**

Liquid in. 20mM Tris-HCl buffer (pH 7.5) containing, 10% glycerol

**Purity**

&gt; 95% by SDS-PAGE

**Tag**

Non-Tagged

**Application**

SDS-PAGE

**Storage Condition**

Can be stored at +2C to +8C for 1 week. For long term storage, aliquot and store at -20C to -80C. Avoid repeated freezing and thawing cycles.

## BACKGROUND

---

**Description**

Alpha-Synuclein, also known as SNCA, an acidic neuronal protein of 140 amino acids, is extremely heat-resistant and is natively unfolded with an extended structure primarily composed of random coils. alpha-Synuclein has been suggested to be implicated in the pathogenesis of Parkinson. Recombinant mouse alpha-Synuclein, was expressed in E. coli and purified by using conventional chromatography techniques

# Recombinant mouse alpha-Synuclein protein

Catalog Number: ATGP0619

## Amino acid Sequence

MDVFMKGLSK AKEGVVAAAE KTKQGVAEAA GKTKEGVLYV GSKTKEGVVH GVTTVAEKTQ EQVTNVGGAV VTGVTAVAQK  
TVEGAGNIAA ATGFVKKQDM GKGEEGYPQE GILEDMPVDP GSEAYEMPSE EGYQDYEPEA

## General References

ueda K., et al. (1993) Proc. Natl. Acad. Sci. uSA 90:11282-11286

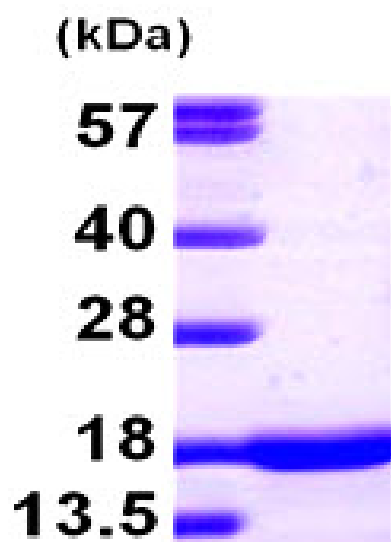
Kim J., et al. (1997) Molecules and Cells 7:78-83

Jakes R., et al. (1994) FEBS lett. 345:27-32.

## DATA

### SDS-PAGE

3ug by SDS-PAGE under reducing condition and visualized by coomassie blue stain.



15% SDS-PAGE (3ug)