

Recombinant human MTPN protein

Catalog Number: ATGP0621

PRODUCT INFORMATION

Expression system

E.coli

Domain

1-118aa

UniProt No.

P58546

NCBI Accession No.

NP_665807

Alternative Names

Myotrophin, Protein V-1, GCDP, Myotrophin, Protein V 1, Protein V1,

PRODUCT SPECIFICATION

Molecular Weight

15 kDa (138aa) confirmed by MALDI-TOF

Concentration

1mg/ml (determined by Bradford assay)

Formulation

Liquid in. 20mM Tris-HCl buffer (pH 8.0) containing 10% glycerol

Purity

> 90% by SDS-PAGE

Tag

His-Tag

Application

SDS-PAGE

Storage Condition

Can be stored at +2C to +8C for 1 week. For long term storage, aliquot and store at -20C to -80C. Avoid repeated freezing and thawing cycles.

BACKGROUND

Description

MTPN (myotrophin), an ankyrin repeat protein, stimulates protein synthesis and cardiomyocyte growth to initiate cardiac hypertrophy by activating the NF-kappaB signaling cascade. This protein plays a potential role in cerebellar morphogenesis and may function in differentiation of cerebellar neurons, particularly of granule cells. Elevated levels of MTPN are expressed in human dilated cardiomyopathic and ischemic hearts. Recombinant human MTPN, fused to His-tag at N-terminus, was expressed in E. coli and purified by using conventional chromatography.

Recombinant human MTPN protein

Catalog Number: ATGP0621

Amino acid Sequence

<MGSSHHHHHH SSGLVPRGSH> MCDKEFMWAL KNGDLDEVKD YVAKGEDVNR TLEGGRKPLH YAADCGQLEI
LEFLLLKGAD INAPDKHHIT PLLSAVYEGH VSCVKLLLSK GADKTVKGPDGLTAFEATDN QAIKALLQ

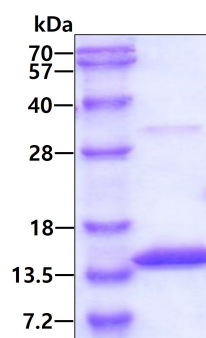
General References

Sen S., et al. (2008) J Biol Chem. 283(41):27947-56.

Sivasubramanian N., et al (2002) J Biol Chem. 277(26):23888-97.

DATA

SDS-PAGE



3ug by SDS-PAGE under reducing condition and visualized by coomassie blue stain.