

# Recombinant human UBE2V2 protein

Catalog Number: ATGP0642

## PRODUCT INFORMATION

---

**Expression system**

E.coli

**Domain**

1-145aa

**UniProt No.**

Q15819

**NCBI Accession No.**

NP\_003341

**Alternative Names**

ubiquitin-conjugating enzyme E2 variant 2, DDVit-1, DDVIT1, EDAF-1, EDPF-1, EDPF1, MMS2, uEV-2, uEV2, ubiquitin-conjugating enzyme E2 variant 2

## PRODUCT SPECIFICATION

---

**Molecular Weight**

18.5 kDa (165aa) confirmed by MALDI-TOF

**Concentration**

0.5mg/ml (determined by Bradford assay)

**Formulation**

Liquid in. 20mM Tris-HCl buffer (pH 8.0) containing 10% glycerol 0.1M NaCl

**Purity**

&gt; 95% by SDS-PAGE

**Tag**

His-Tag

**Application**

SDS-PAGE

**Storage Condition**

Can be stored at +2C to +8C for 1 week. For long term storage, aliquot and store at -20C to -80C. Avoid repeated freezing and thawing cycles.

## BACKGROUND

---

**Description**

UBE2V2, also known as ubiquitin-conjugating enzyme E2 variant 2, constitutes a distinct subfamily within the E2 protein family. They have sequence similarity to other ubiquitin-conjugating enzymes but lack the conserved cysteine residue that is critical for the catalytic activity of E2s. This protein also shares homology with ubiquitin-conjugating enzyme E2 variant 1 and yeast MMS2 gene product. It may be involved in the differentiation of monocytes and enterocytes. Recombinant human UBE2V2 protein, fused to His-tag at N-terminus, was

# Recombinant human UBE2V2 protein

Catalog Number: ATGP0642

expressed in E. coli and purified by using conventional chromatography techniques.

## Amino acid Sequence

<MGSSHHHHHH SSGLVPRGSH> MAVSTGVKVP RNFRLLEELE EGQKGVGDGT VSWGLEDDED MTLTRWTGMI  
IGPPRTNYEN RIYSLKVECG PKYPEAPPSV RFVTKINMNG INNSSGMVDA RSIPVLAKWQ NSYSIKVVLQ ELRRLMMSKE  
NMKLPQPPEG QTYNN

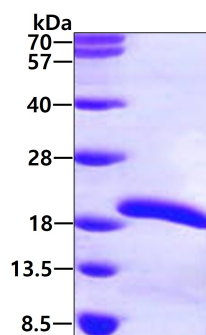
## General References

unk I., et al. (2008) Proc Natl Acad Sci u S A. 105(10):3768-73.

## DATA

---

### SDS-PAGE



3ug by SDS-PAGE under reducing condition and visualized by coomassie blue stain.