

Recombinant human RND3 protein

Catalog Number: ATGP0651

PRODUCT INFORMATION

Expression system

E.coli

Domain

1-241aa

UniProt No.

P61587

NCBI Accession No.

NP_005159

Alternative Names

Rho-related GTP-binding protein RhoE, ARHE, memB, Rho8, RhoE, Rho-related GTP-binding protein RhoE

PRODUCT SPECIFICATION

Molecular Weight

29.2 kDa (261aa) confirmed by MALDI-TOF

Concentration

0.5mg/ml (determined by Bradford assay)

Formulation

Liquid in. 20mM Tris-HCl buffer (pH 8.0) containing 1mM DTT, 40% glycerol, 1mM EDTA, 0.1M NaCl

Purity

> 90% by SDS-PAGE

Tag

His-Tag

Application

SDS-PAGE

Storage Condition

Can be stored at +2C to +8C for 1 week. For long term storage, aliquot and store at -20C to -80C. Avoid repeated freezing and thawing cycles.

BACKGROUND

Description

Rho-related GTP-binding protein RhoE, also known as RND3, is a small GTPase of the Ras superfamily that regulate the organization of the actin cytoskeleton in response to extracellular growth factors. RND3 activity leads to a decrease in stress fibers and increased cell migration, at least in part through regulation of the Rho-dependent kinase ROCK1. Also, RND3 has been implicated in inhibition of DNA-damage induced apoptosis and cell cycle arrest. Recombinant human RND3 protein, fused to His-tag at N-terminus, was expressed in E. coli and purified by using conventional chromatography techniques.

Recombinant human RND3 protein

Catalog Number: ATGP0651

Amino acid Sequence

MGSSHHHHHH SGLVPRGSH MKERRASQKL SSKSIMDPNQ NVKCKIVVVG DSQCGKTALL HVFAKDCFPE NYVPTVFENY
TASFEIDTQR IELSLWDTSG SPYYDNVRPL SYPDSDAVLI CFDISRPETL DSVLKKWKGE IQEFCPNTKM LLVGCKSDLR
TDVSTLVELS NHRQTPVSYD QGANMAKQIG AATYIECSAL QSENSVRDIF HVATLACVNK TNKNVKRNKS QRATKRISHM
PSRPELSAVA TDLRKDKAKS C

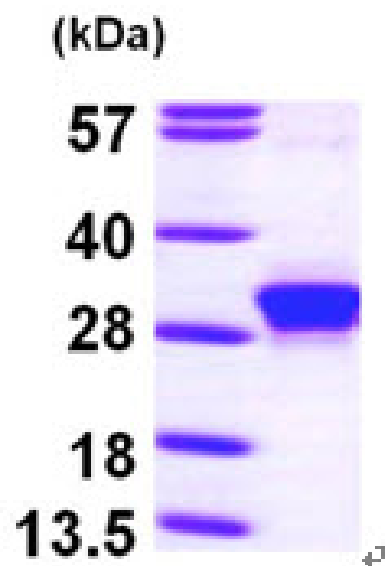
General References

Riento K., et al. (2005) Mol Cell Biol. 23:4219-29.
Boswell S A., et al. (2007) J Biol Chem. 282:4850-8

DATA

SDS-PAGE

3ug by SDS-PAGE under reducing condition and visualized by coomassie blue stain.



15% SDS-PAGE (3ug)