

# Recombinant human CFBF protein

Catalog Number: ATGP0667

## PRODUCT INFORMATION

---

### Expression system

E.coli

### Domain

1-182aa

### UniProt No.

Q13951

### NCBI Accession No.

NP\_001746

### Alternative Names

Core-binding factor beta subunit, PEBP2B (polyomavirus enhancer binding protein b), PEA2, CBF-beta, Core-binding factor, beta subunit

## PRODUCT SPECIFICATION

---

### Molecular Weight

23.6 kDa (202aa) confirmed by MALDI-TOF

### Concentration

0.5mg/ml (determined by Bradford assay)

### Formulation

Liquid in. 20mM MES buffer (pH 6.0) containing 0.1mM PMSF, 10% glycerol

### Purity

> 85% by SDS-PAGE

### Tag

His-Tag

### Application

SDS-PAGE

### Storage Condition

Can be stored at +2C to +8C for 1 week. For long term storage, aliquot and store at -20C to -80C. Avoid repeated freezing and thawing cycles.

## BACKGROUND

---

### Description

CBFB, also known as PEBP2B, is the beta subunit of a heterodimeric core-binding transcription factor belonging to the PEBP2/CBF transcription factor family which master-regulates a host of genes specific to hematopoiesis (e. g., RuNX1) and osteogenesis (e. g., RuNX2). This protein is a non-DNA binding regulatory subunit and it allosterically enhances DNA binding by alpha subunit. Recombinant human CFBF protein, fused to His-tag at N-terminus, was expressed in E. coli and purified by using conventional chromatography.

# Recombinant human CFBF protein

Catalog Number: ATGP0667

## Amino acid Sequence

<MGSSHHHHHH SSGLVPRGSH> MPRVVPDQRS KFENEEFFRK LSRECEIKYT GFRDRPHEER QARFQNACRD  
GRSEIAFVAT GTNLSLQFFP ASWQGEQRQT PSREYVDLER EAGKVYLKAP MILNGVCVIW KGWIDLQRLD GMGCLEFDEE  
RAQQEDALAQ QAFEEARRRT REFEDRDRSH REEMEVRSQ LLAVTGKKTTP

## General References

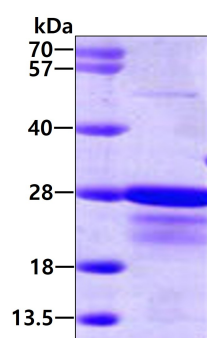
Speck NA., et al. (2009) Blood. 113(13):3070-9.

Ito Y., et al. (2008) Blood. 112(9):3777-87.

## DATA

---

### SDS-PAGE



3 $\mu$ g by SDS-PAGE under reducing condition and visualized by coomassie blue stain.