

Recombinant human TES protein

Catalog Number: ATGP0684

PRODUCT INFORMATION

Expression system

E.coli

Domain

1-421aa

UniProt No.

Q9UGI8

NCBI Accession No.

NP_056456

Alternative Names

Testin, TESS, TESS-2, Testin

PRODUCT SPECIFICATION

Molecular Weight

50.1 kDa (441aa) confirmed by MALDI-TOF

Concentration

0.5mg/ml (determined by Bradford assay)

Formulation

Liquid in. 20mM Tris-HCl buffer (pH 8.0) containing 0.1M NaCl, 1mM DTT, 10% glycerol

Purity

> 90% by SDS-PAGE

Tag

His-Tag

Application

SDS-PAGE

Storage Condition

Can be stored at +2C to +8C for 1 week. For long term storage, aliquot and store at -20C to -80C. Avoid repeated freezing and thawing cycles.

BACKGROUND

Description

TES is a tumor suppressor protein and may play role in cell adhesion, cell spreading and in the reorganization of the actin cytoskeleton. This protein localizes to cell-cell contacts and actin stress fibres, and interacts with a variety of cytoskeletal proteins including Zyxin, Mena, VASP, Talin and Actin. The ability of TES to associate with alpha-actinin, paxillin and Zyxin is dependent on the conformational state of the molecule. Recombinant human TES protein, fused to His-tag at N-terminus, was expressed in E. coli and purified by using conventional chromatography techniques.

Recombinant human TES protein

Catalog Number: ATGP0684

Amino acid Sequence

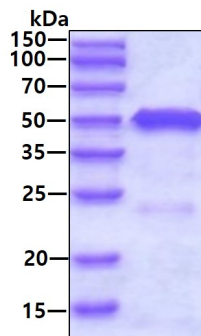
<MGSSHHHHHH SSGLVPRGSH> MDLENKVKKM GLGHEQGFGA PCLKCKEKCE GFELHFWRKI CRNCKCGQEE
HDVLLSNEED RKGKLFEDT KYTTLIAKLK SDGIPMYKRN VMILTNPVAA KKNVSINTVT YEWAPPVQNQ ALARQYMQML
PKEKQPVAGS EGAQYRKKQL AKQLPAHDQD PSKCHELSPR EVKEME QFVK KYKSEALGVG DVKLPCEMDA QGPKQMNIPG
GDRSTPAAVG AMEDKSAEHK RTQYSCYCCK LSMKEGDP AI YAERAGYDKL WHPACFVCST CHELLVDM IY FWKNEKLYCG
RHYCDSEKPR CAGCDELIFS NEYTQAENQN WHLKHFFCCFD CDSILAGEIY VMVNDKPVCK PCYVKNHAVV CQGCHNAIDP
EVQRVTYNNF SWHASTECFL CSCCSKCLIG QKFMPVEGMV FCSVECKKRM S

General References

Qiu H., et al. (2010) Cancer Sci. 101(5):1255-60.
Sato T., et al. (2003) J Biol Chem. 278(48):47534-44.

DATA

SDS-PAGE



3 μ g by SDS-PAGE under reducing condition and visualized by coomassie blue stain