

# Recombinant human RCL protein

Catalog Number: ATGP0698

## PRODUCT INFORMATION

---

### Expression system

E.coli

### Domain

1-174aa

### UniProt No.

O43598

### NCBI Accession No.

NP\_006434

### Alternative Names

Deoxyribonucleoside 5'-monophosphate N-glycosidase isoform 1, c-Myc-responsive protein Rcl, C6orf108

## PRODUCT SPECIFICATION

---

### Molecular Weight

21.2 kDa (194aa) confirmed by MALDI-TOF

### Concentration

1mg/ml (determined by Bradford assay)

### Formulation

Liquid in. 20mM Tris-HCl buffer (pH 8.0) containing 1mM DTT, 10% glycerol

### Purity

> 95% by SDS-PAGE

### Tag

His-Tag

### Application

SDS-PAGE

### Storage Condition

Can be stored at +2C to +8C for 1 week. For long term storage, aliquot and store at -20C to -80C. Avoid repeated freezing and thawing cycles.

## BACKGROUND

---

### Description

Deoxyribonucleoside 5'-monophosphate N-glycosidase isoform 1, also known as RCL, belonged to the N-deoxyribosyltransferase family. This protein catalyzes the cleavage of the N-glycosidic bond of deoxyribonucleoside 5'-monophosphates to yield deoxyribose 5-phosphate and a purine or pyrimidine base. RCL was identified on the basis of its stimulation by c-Myc protein. The latter is a transcription factor that participates in the regulation of cell proliferation, differentiation, and apoptosis. Recombinant human RCL protein, fused to His-tag at N-terminus, was expressed in E. coli and purified by using conventional chromatography techniques.

# Recombinant human RCL protein

Catalog Number: ATGP0698

## Amino acid Sequence

<MGSSHHHHHH SSGLVPRGSH> MAAAMVPGRS ESWERGEPR PALYFCGSIR GGREDRTLYE RIVSRLRRFG  
TVLTEHVAAA ELGARGEEAA GGDRLIHEQD LEWLQQADV VAEVTQPSLG VGYELGRAVA FNKRILCLFR PQSGRVLSAM  
IRGAADGSRF QVWDYEEGEV EALLDRYFEA DPPGQVAASP DPTT

## General References

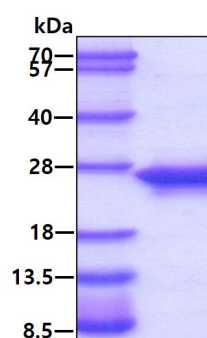
Ghiorghi Y K., et al. (2007) J Biol Chem. 282(11):8150-6.

Munqall A J., et al. (2003) Nature. 425(6960):805-11.

## DATA

---

### SDS-PAGE



3 $\mu$ g by SDS-PAGE under reducing condition and visualized by coomassie blue stain.