

# Recombinant human ANP32A protein

Catalog Number: ATGP0712

## PRODUCT INFORMATION

---

### Expression system

E.coli

### Domain

1-249aa

### UniProt No.

P39687

### NCBI Accession No.

NP\_006296

### Alternative Names

Acidic leucine-rich nuclear phosphoprotein 32 family member A, Acidic leucine-rich nuclear phosphoprotein 32 family member A, I1PP2A, LANP, MAPM, PHAP1, PHAPI, PP32, Mapmodulin

## PRODUCT SPECIFICATION

---

### Molecular Weight

30.7 kDa (269aa) confirmed by MALDI-TOF

### Concentration

0.5mg/ml (determined by Bradford assay)

### Formulation

Liquid in. 20mM Tris-HCl buffer (pH 8.0) containing 10% glycerol, 1mM DTT, 100mM NaCl, 0.1mM PMSF

### Purity

> 95% by SDS-PAGE

### Tag

His-Tag

### Application

SDS-PAGE

### Storage Condition

Can be stored at +2C to +8C for 1 week. For long term storage, aliquot and store at -20C to -80C. Avoid repeated freezing and thawing cycles.

## BACKGROUND

---

### Description

ANP32A (acidic leucine-rich nuclear phosphoprotein 32 family member A) has been shown to interact with MAP1B, TAF1A and Protein SET. This protein Implicated in a number of cellular processes, including proliferation, differentiation, caspase-dependent and caspase-independent apoptosis. Also, it plays a role in E4F1-mediated transcriptional repression. Recombinant human ANP32A protein, fused to His-tag at N-terminus, was expressed in E. coli and purified by using conventional chromatography techniques.

## Recombinant human ANP32A protein

Catalog Number: ATGP0712

### Amino acid Sequence

MGSSHHHHHH SSGLVPRGSH MEMGRRIHLE LRNRTPSDVK ELVLDNSRSN EGKLEGLTDE FEELEFLSTI NVGLTSIANL  
PKLNKLLKLE LSDNRVSGGL EVLAEKCPNL THLNLSGNKI KDLSTIEPLK KLENLKSLDL FNCEVTNLND YRENVFKLLP  
QLTYLDGYDR DDKEAPSDA EGYVEGLDDE EEDEDEEEYD EDAQVVEDEE DEDEEEEGEE EDVSGEEEEED EEGYNDGEVD  
DEEDEEELGE EERGQKRKRE PEDEGEDDD

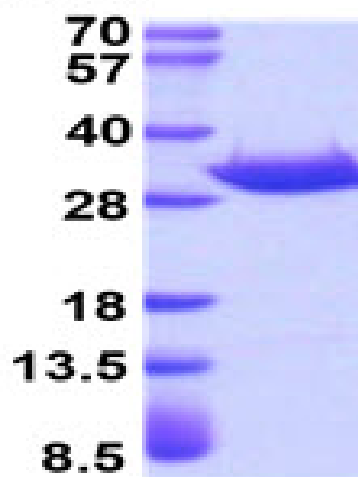
### General References

Matilla A., et al (2005) Cerebellum 4:7-18  
Bai J., et al. (2001) Oncogene 20:2153-2160

## DATA

### SDS-PAGE

(kDa)



3ug by SDS-PAGE under reducing condition and visualized by coomassie blue stain.

15% SDS-PAGE (3ug)