

Recombinant mouse LYPLA1 protein

Catalog Number: ATGP0720

PRODUCT INFORMATION

Expression system

E.coli

Domain

1-230aa

UniProt No.

P97823

NCBI Accession No.

NP_032892

Alternative Names

Acyl-protein thioesterase 1, lysophospholipase 1, Pla1a, APT-1, LysoPLA I, LPL-I, APT1

PRODUCT SPECIFICATION

Molecular Weight

26.8 kDa (250aa) confirmed by MALDI-TOF

Concentration

0.5mg/ml (determined by Bradford assay)

Formulation

Liquid in. 20mM Tris-HCl buffer (pH 8.0) containing 10% glycerol, 0.1M NaCl, 1mM DTT

Purity

> 90% by SDS-PAGE

Tag

His-Tag

Application

SDS-PAGE

Storage Condition

Can be stored at +2C to +8C for 1 week. For long term storage, aliquot and store at -20C to -80C. Avoid repeated freezing and thawing cycles.

BACKGROUND

Description

LYPLA1 is lysophospholipase that acts on biological membranes to regulate the multifunctional lysophospholipids. This protein hydrolyzes fatty acids from S-acylated cysteine residues in proteins such as trimeric G alpha proteins or HRAS and also has depalmitoylating activity. Recombinant mouse LYPLA1 protein, fused to His-tag at N-terminus, was expressed in E. coli and purified by using conventional chromatography techniques

Recombinant mouse LYPLA1 protein

Catalog Number: ATGP0720

Amino acid Sequence

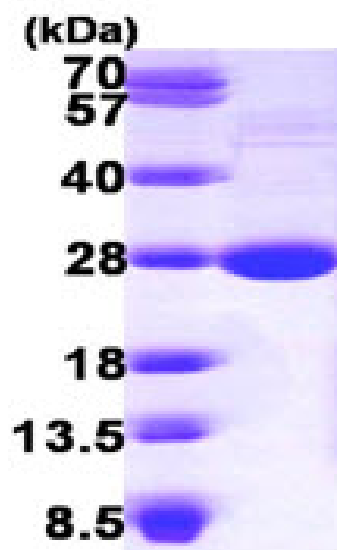
MGSSHHHHHH SSGLVPRGSH MCGNNMSAPM PAVVPAARKA TAAVIFLHGL GDTGHGWAEA FAGIKSPHIK YICPHAPVMP
VTLNMNMAMP SWFDIVGLSP DSQEDESGIK QAAETVKALI DQEVKNGIPS NRIILGGFSQ GGALSLYTAL TTQQKLAGVT
ALSCWLPLRA SFSQGPINSA NRDISVLQCH GDCDPLVPLM FGSLTVERLK ALINPANVTF KIYEGMMHSS CQQEMMDVKH
FIDKLLPPID

General References

Schaloske R.H., et al. (2006) Biochim Biophys Acta. 1761:1246-1259.
Hiraoka M., et al. (2002) J. Biol. Chem 277:10090-10099.

DATA

SDS-PAGE



3ug by SDS-PAGE under reducing condition and visualized by coomassie blue stain.

15% SDS-PAGE (3ug)