

Recombinant human CARHSP1 protein

Catalog Number: ATGP0729

PRODUCT INFORMATION

Expression system

E.coli

Domain

1-147aa

UniProt No.

Q9Y2V2

NCBI Accession No.

NP_055131

Alternative Names

Calcium-regulated heat stable protein 1, CRHSP-24, CSDC1, MGC111446, Calcium-regulated heat stable protein 1

PRODUCT SPECIFICATION

Molecular Weight

18 kDa (167aa) confirmed by MALDI-TOF

Concentration

0.5mg/ml (determined by BCA assay)

Formulation

Liquid in. 20mM Tris-HCl buffer (pH 8.0) containing 10% glycerol, 0.1M NaCl

Purity

> 90% by SDS-PAGE

Tag

His-Tag

Application

SDS-PAGE

Storage Condition

Can be stored at +2C to +8C for 1 week. For long term storage, aliquot and store at -20C to -80C. Avoid repeated freezing and thawing cycles.

BACKGROUND

Description

CRAHSP1 is a serine phosphoprotein originally identified as a physiological substrate for the Ca²⁺-calmodulin regulated protein phosphatase calcineurin (PP2B). This protein interacts with the STYX/dead phosphate protein in developing spermatids and is a paralog of the brain-specific mRNA-binding protein PIPPIN. It is thought to play a common role in calcium-mediated signal transduction resulting from phosphorylation on serine residues. Recombinant human CRAHSP1 protein, fused to His-tag at N-terminus, was expressed in E. coli and purified by using conventional chromatography techniques

Recombinant human CARHSP1 protein

Catalog Number: ATGP0729

Amino acid Sequence

MGSSHHHHHH SSSLVPRGSH MSSEPPPPQ PPTHQASVGL LDTPRSRERS PSPLRGNVVP SPLPTRRTRT FSATVRASQG
PVYKGVCKCF CRSKGHGFI PADGGPDIFL HISDVEGEYV PVEGDEVYK MCSIPPKNEK LQAVEVVITH LAPGKHW
SGHVISS

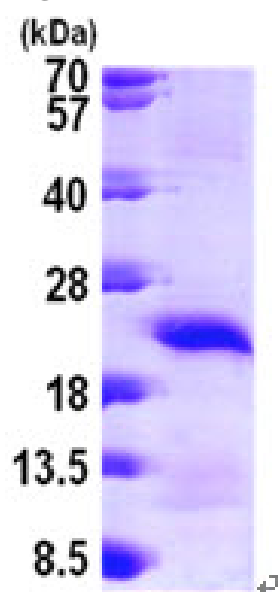
General References

Schafer C., et al. (2003) Am J Physiol Gastrointest Liver Physiol.. 285:G726-34

Groblewski G.E, et al. (1998) J. Biol. Chem. 273: 22738-22744.

DATA

SDS-PAGE



3ug by SDS-PAGE under reducing condition and visualized by coomassie blue stain.

15% SDS-PAGE (3ug)