

Recombinant human MAPRE3 protein

Catalog Number: ATGP0746

PRODUCT INFORMATION

Expression system

E.coli

Domain

1-281aa

UniProt No.

Q9UPY8

NCBI Accession No.

NP_036458

Alternative Names

microtubule-associated protein RP/EB family member 3, EB3, EBF3, EBF3-S, RP3

PRODUCT SPECIFICATION

Molecular Weight

34.1 kDa (301aa)) confirmed by MALDI-TOF

Concentration

1mg/ml (determined by Bradford assay)

Formulation

Liquid in. 20mM Tris-HCl buffer (pH 8.0) containing 10% glycerol, 2mM DTT, 0.1M NaCl.

Purity

> 90% by SDS-PAGE

Tag

His-Tag

Application

SDS-PAGE

Storage Condition

Can be stored at +2C to +8C for 1 week. For long term storage, aliquot and store at -20C to -80C. Avoid repeated freezing and thawing cycles.

BACKGROUND

Description

MAPRE1 is a microtubule associated protein that interacts with the colorectal adenomatous polyposis coli tumor suppressor protein and plays important roles in regulating microtubule dynamics, cell polarity, and chromosome stability. This protein is related to MAPRE1 and likewise associates with the microtubule cytoskeleton. MAPRE3 is expressed predominantly in the central nervous system and preferentially associates with APCL, a homolog of the adenomatous polyposis coli tumor suppressor protein. Recombinant human MAPRE3 protein, fused to His-tag at N-terminus, was expressed in E. coli and purified by using conventional chromatography techniques.

Recombinant human MAPRE3 protein

Catalog Number: ATGP0746

Amino acid Sequence

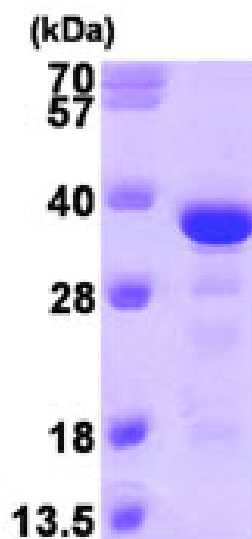
<MGSSHHHHH SSGLVPRGSH> MAVNVYSTSV TSENLSRHDM LAWVNDLHL NYTKIEQLCS GAAYCQFMDM
LFPGCVHLRK VKFQAKLEHE YIHNFKVLQA AFKKMGVDKI IPVEKLVKGG FQDNFEFIQW FKKFFDANYD GKDYNPLLAR
QGQDVAPPPN PGDQIFNKS KKLIGTAVPQR TSPTGPKNMQ TSGRLSNVAP PCILRKNPPS ARNGGHETDA QILELNQQLV
DLKLTVDGLE KERDFYFSKL RDIELICQEH ESENSPVISG IIGILYATEE GFAPPEDDEI EEHQQEDQDE Y

General References

Berrueta L., et al. (1998) Proc Natl Acad Sci U S A. 95(18):10596-601.
Bu W., et al. (2003) J Biol Chem. 278(50):49721-31.

DATA

SDS-PAGE



3ug by SDS-PAGE under reducing condition and visualized by coomassie blue stain.

15% SDS-PAGE (3ug)