

# Recombinant human PDRG1 protein

Catalog Number: ATGP0785

## PRODUCT INFORMATION

---

### Expression system

E.coli

### Domain

1-133aa

### UniProt No.

Q9NUG6

### NCBI Accession No.

NP\_110442

### Alternative Names

p53 and DNA-damage regulated 1, C20orf126, PDRG

## PRODUCT SPECIFICATION

---

### Molecular Weight

17.6 kDa (153aa) confirmed by MALDI-TOF

### Concentration

0.5mg/ml (determined by Bradford assay)

### Formulation

Liquid in. 20mM Tris-HCl buffer (pH 8.0) containing 0.2M NaCl, 5mM DTT, 20% glycerol

### Purity

> 90% by SDS-PAGE

### Tag

His-Tag

### Application

SDS-PAGE

### Storage Condition

Can be stored at +2C to +8C for 1 week. For long term storage, aliquot and store at -20C to -80C. Avoid repeated freezing and thawing cycles.

## BACKGROUND

---

### Description

PDRG1, also known as PDRG or C20orf126, is a 133 amino acid protein that localizes to the cytoplasm and belongs to the prefoldin subunit beta family. Expressed predominately in normal testicular tissue, PDRG1 is functionally induced by ultraviolet light and is thought to play a role in chaperone-mediated protein folding, possibly playing a role in cellular degradation. It is associated with Creutzfeldt-Jakob disease, amyotrophic lateral sclerosis, spinal muscular atrophy, ring chromosome 20 epilepsy syndrome and Alagille syndrome. Recombinant human PDRG1 protein, fused to His-tag at N-terminus, was expressed in E. coli and purified by using

# Recombinant human PDRG1 protein

Catalog Number: ATGP0785

conventional chromatography techniques.

## Amino acid Sequence

MGSSHHHHHH SGLVPRGSH MLSPEAERVL RYLVEVEELA EEVLADKRQI VLDLTKRNQN REGLRALQKD LSLSEDVMVC  
FGNMFIKMPH PETKEMIEKD QDHLDKEIEK LRKQLKVKN RLFEAQGKPE LKGFNLNPLN QDELKALKVI LKG

## General References

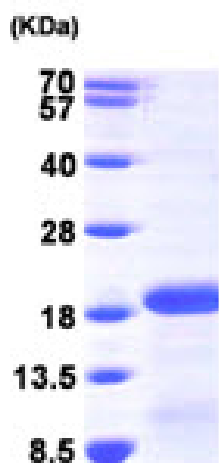
Russell RB., et al. (2008) Nat Chem Biol. 4(11):666-73.

Luo X., et al. (2003) Oncogene. 22(46):7247-57.

## DATA

---

### SDS-PAGE



3ug by SDS-PAGE under reducing condition and visualized by coomassie blue stain.

15% SDS-PAGE (3ug)