

Recombinant human MP1/LAMTOR3 protein

Catalog Number: ATGP0805

PRODUCT INFORMATION

Expression system

E.coli

Domain

1-124aa

UniProt No.

Q9UHA4

NCBI Accession No.

NP_068805

Alternative Names

Mitogen-activated protein kinase scaffold protein 1, MAP2K1IP1, MAPBP, MP1

PRODUCT SPECIFICATION

Molecular Weight

15.8 kDa (144aa) confirmed by MALDI-TOF

Concentration

0.5mg/ml (determined by Bradford assay)

Formulation

Liquid in. 20mM Tris-HCl buffer (pH 8.0) containing 20% glycerol, 5mM DTT, 100mM NaCl

Purity

> 95% by SDS-PAGE

Tag

His-Tag

Application

SDS-PAGE

Storage Condition

Can be stored at +2C to +8C for 1 week. For long term storage, aliquot and store at -20C to -80C. Avoid repeated freezing and thawing cycles.

BACKGROUND

Description

MAPKSP1 (Mitogen-activated protein kinase scaffold protein 1) is a scaffold protein that functions in the extracellular signal-regulated kinase (ERK) cascade. The protein is localized to late endosomes by the mitogen-activated protein-binding protein-interacting protein, and binds specifically to MAP kinase kinase MAP2K1/MEK1, MAP kinase MAPK3/ERK1, and MAP kinase MAPK1/ERK2. Recombinant human MAPKSP1 protein, fused to His-tag at N-terminus, was expressed in E. coli and purified by using conventional chromatography techniques.

Recombinant human MP1/LAMTOR3 protein

Catalog Number: ATGP0805

Amino acid Sequence

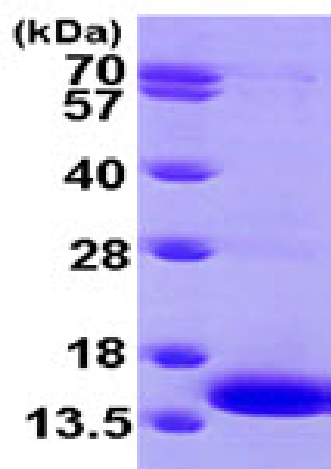
MGSSHHHHHH SSGLVPRGSH MADDLKRFLY KKLPSVEGLH AIVSDRDGV PVIKVANDNA PEHALRPGFL STFALATDQG
SKLGLSKNKS IICYNTYQV VQFNRLPLVV SFIASSANT GLIVSLEKEL APLFEELRQV VEVS

General References

Wunderlich, et al. (2001) J. Cell Biol. (United States) 152 (4): 765-76.
Schaeffer HJ, et al. (1998) Science 281 (5383): 1668-71.

DATA

SDS-PAGE



3ug by SDS-PAGE under reducing condition and visualized by coomassie blue stain.

15% SDS-PAGE (3ug)