

# Recombinant human NHP2L1 protein

Catalog Number: ATGP0812

## PRODUCT INFORMATION

---

### Expression system

E.coli

### Domain

1-128aa

### UniProt No.

P55769

### NCBI Accession No.

NP\_004999

### Alternative Names

NHP2(non-histone chromosome protein 2)-like 1, FA1, NHPX, OTK27, SNRNP15-5, SNU13, SPAG12, SSFA1

## PRODUCT SPECIFICATION

---

### Molecular Weight

16.7 kDa (152aa) confirmed by MALDI-TOF

### Concentration

0.25mg/ml (determined by Bradford assay)

### Formulation

Liquid in. 20mM Tris-HCl buffer (pH 7.5) containing 100mM NaCl, 10% glycerol

### Purity

> 95% by SDS-PAGE

### Tag

His-Tag

### Application

SDS-PAGE

### Storage Condition

Can be stored at +2C to +8C for 1 week. For long term storage, aliquot and store at -20C to -80C. Avoid repeated freezing and thawing cycles.

## BACKGROUND

---

### Description

NHP2L1 belongs to the ribosomal protein L7Ae family. This protein localizes to the nucleus, mainly concentrated in the dense fibrillar component of the nucleolus. It directly binds to the 5' stem-loop of u4 snRNA and plays an important role in the late stage of spliceosome assembly, prior to step I of splicing catalysis. Recombinant human NHP2L1 protein, fused to His-tag at N-terminus, was expressed in E. coli and purified by using conventional chromatography.

## Recombinant human NHP2L1 protein

Catalog Number: ATGP0812

### Amino acid Sequence

MGSSHHHHHH SSSLVPRGSH MGSHMTEADV NPKAYPLADA HLTKKLLDLV QQSCNYKQLR KGANEATKTL NRGISEFIVM  
AADAEPLEII LHLPLCEDK NVPYVFVRSK QALGRACGVS RPIACSVTI KEGSQLKQIQI QSIQQSIERL LV

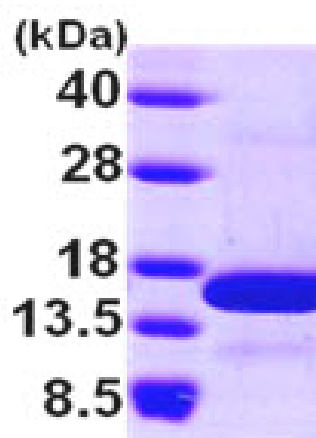
### General References

Luhrmann R., et al. (2006) Mol Cell Biol. 26(13):5146-54.

Jovin TM., et al (2005) RNA. 11(2):197-209.

## DATA

### SDS-PAGE



3ug by SDS-PAGE under reducing condition and visualized by coomassie blue stain.

15% SDS-PAGE (3ug)