

Recombinant human RAB1B protein

Catalog Number: ATGP0828

PRODUCT INFORMATION

Expression system

E.coli

Domain

1-201aa

UniProt No.

Q9H0U4

NCBI Accession No.

NP_112243

Alternative Names

Ras-related protein Rab-1B, RAB1B member RAS oncogene family

PRODUCT SPECIFICATION

Molecular Weight

24.3 kDa (221aa) confirmed by MALDI-TOF

Concentration

1mg/ml (determined by Bradford assay)

Formulation

Liquid in. 20mM Tris-HCl buffer (pH 8.0) containing 10% glycerol

Purity

> 90% by SDS-PAGE

Tag

His-Tag

Application

SDS-PAGE

Storage Condition

Can be stored at +2C to +8C for 1 week. For long term storage, aliquot and store at -20C to -80C. Avoid repeated freezing and thawing cycles.

BACKGROUND

Description

RAB1B is a member of the RAB protein family, low molecular mass monomeric GTPases localized on the cytoplasmic surfaces of distinct membrane bound organelles. This protein functions in the early secretory pathway and is essential for vesicle transport between the endoplasmic reticulum (ER) and Golgi. Recombinant human RAB1B protein, fused to His-tag at N-terminus, was expressed in E. coli and purified by using conventional chromatography.

Recombinant human RAB1B protein

Catalog Number: ATGP0828

Amino acid Sequence

MGSSHHHHHH SGLVPRGSH MNPEYDYLFK LLLIGDSGVG KSCLLRFAD DTYTESYIST IGVDFKIRTI ELDGKTIKIQ
IWDTAGQERF RTITSSYYRG AHGIIVVYDV TDQESYANVK QWLQEIDRYA SENVNKLLVG NKSDLTTKKV VDNTTAKEFA
DSLGIPILET SAKNATNVEQ AFMTMAAEIK KRMGPGAASG GERPNLKIDS TPVKPAGGGC C

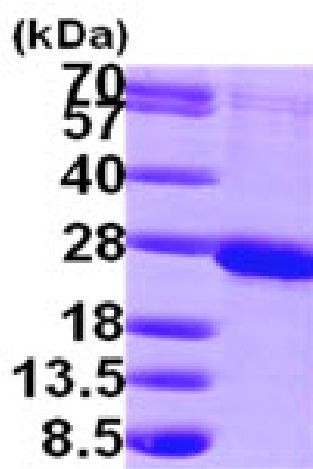
General References

Colombo MI., et al. (2010) Traffic. 11(9):1246-61.

Kawaoka Y., et al (2010) J Virol. 84(9):4816-20.

DATA

SDS-PAGE



3ug by SDS-PAGE under reducing condition and visualized by coomassie blue stain.

15% SDS-PAGE (3ug)