

Recombinant human ERP27 protein

Catalog Number: ATGP0829

PRODUCT INFORMATION

Expression system

E.coli

Domain

26-273aa

UniProt No.

Q96DN0

NCBI Accession No.

NP_689534

Alternative Names

Endoplasmic reticulum resident protein 27, PDIA8, C12orf46

PRODUCT SPECIFICATION

Molecular Weight

30 kDa (269aa) confirmed by MALDI-TOF

Concentration

1mg/ml (determined by Bradford assay)

Formulation

Liquid in. 20mM Tris-HCl buffer (pH 8.0) containing 10% glycerol, 1mM DTT

Purity

> 90% by SDS-PAGE

Tag

His-Tag

Application

SDS-PAGE

Storage Condition

Can be stored at +2C to +8C for 1 week. For long term storage, aliquot and store at -20C to -80C. Avoid repeated freezing and thawing cycles.

BACKGROUND

Description

ERP27 (endoplasmic reticulum protein 27 kDa) is widely expressed protein that localize to the ER and may act as proteases, protein disulfide isomerases, thiol-disulfide oxidases or phospholipases. ERP27 does not contain a CXXC active site motif indicating that it is a catalytically redox-inactive member of the protein disulfide isomerase family. Recombinant human ERP27 protein was expressed in E. coli and purified by using conventional chromatography techniques.

Recombinant human ERP27 protein

Catalog Number: ATGP0829

Amino acid Sequence

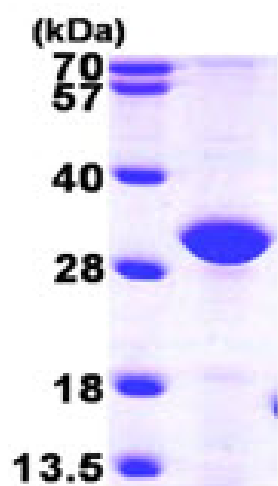
MGSSHHHHHH SGLVPRGSH MEVEKSSDGP GAAQEPTWLT DVPAAMEFIA ATEVAVIGFF QDLEIPAVPI LHSMVQKFPG
VSGISTDSE VLTHYNITGN TICLFRVDN EQLNLEDEDI ESIDATKLSR FIEINSLHMV TEYNPVTVIG LFNSVIQIHL
LLIMNKASPE YEENMHRYQK AAKLFQGKIL FILVDSGMKE NGKVISFFKL KESQLPALAI YQTLDDDEWDT LPTAEVSVEH
VQNFCDGFLS GKLLKENRES EGKTPKVEL

General References

Alanen H., et al. (2006) J Biol Chem. 281(44):33727-38.
Alanen H., et al. (2003) J Biol Chem. 278(31):28912-20.

DATA

SDS-PAGE



3ug by SDS-PAGE under reducing condition and visualized by coomassie blue stain.

15% SDS-PAGE (3ug)