

Recombinant human RAB6A protein

Catalog Number: ATGP0831

PRODUCT INFORMATION

Expression system

E.coli

Domain

1-208aa

UniProt No.

P20340

NCBI Accession No.

NP_002860.2

Alternative Names

Ras-related protein Rab-6A, RAB6, RAB6A, member RAS oncogene family

PRODUCT SPECIFICATION

Molecular Weight

26.1 kDa (232aa) confirmed by MALDI-TOF

Concentration

1mg/ml (determined by Bradford assay)

Formulation

Liquid in. 20mM Tris-HCl buffer (pH 8.0) containing 20% glycerol, 1mM DTT, 0.1M NaCl.

Purity

> 90% by SDS-PAGE

Tag

His-Tag

Application

SDS-PAGE

Storage Condition

Can be stored at +2C to +8C for 1 week. For long term storage, aliquot and store at -20C to -80C. Avoid repeated freezing and thawing cycles.

BACKGROUND

Description

RAB6A belongs to the small GTPase superfamily. It may be involved in protein transport. It is a regulator of membrane traffic from the Golgi apparatus towards the endoplasmic reticulum (ER) and has a low GTPase activity. Recombinant human RAB6A protein, fused to His-tag at N-terminus, was expressed in E. coli and purified by using conventional chromatography techniques.

Amino acid Sequence

<MGSSHHHHHH SGLVPRGSH MGS>MSTGGD FGNPLRKFKL VFLGEQSVGK TSLITRFMYD SFDNTYQATI

Recombinant human RAB6A protein

Catalog Number: ATGP0831

GIDFLSKTMY LEDRTIRLQL WDTAGQERFR SLIPSYIRDS AAVVVYDIT NVNSFQQTTK WIDDVRTERG SDVIIMLVGN
KTDLADKRQV SIEEGERKAK ELNVMIETS AKAGYNVKQL FRRVAAALPG MESTQDRSRE DMIDIKLEKP QEQPVSEGGC SC

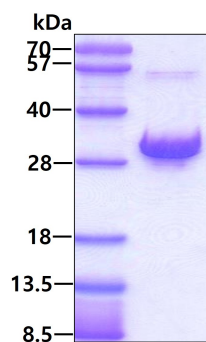
General References

Wanschers B., et al. (2008) Cell Motil Cytoskeleton. 65(3):183-96.

Burguete AS., et al. (2008) Cell. 132(2):286-98.

DATA

SDS-PAGE



3ug by SDS-PAGE under reducing condition and visualized by coomassie blue stain.