

Recombinant human ROBLD3/LAMTOR2 protein

Catalog Number: ATGP0834

PRODUCT INFORMATION

Expression system

E.coli

Domain

1-125aa

UniProt No.

Q9Y2Q5

NCBI Accession No.

NP_054736

Alternative Names

ENDAP, Endosomal adaptor protein p14, Late endosomal/lysosomal adaptor and MAPK and MTOR activator 2, MAPBP-interacting protein, MAPBPIP, MAPKSP1 adaptor protein, MAPKSP1AP, Mitogen activated protein binding protein interacting protein, p14, Ragulator complex protein LAMTOR2, Ragulator2, Roadblock domain containing 3

PRODUCT SPECIFICATION

Molecular Weight

16 kDa (149aa) confirmed by MALDI-TOF

Concentration

1mg/ml (determined by Bradford assay)

Formulation

Liquid in. 20mM Tris-HCl buffer (pH 8.0) containing 0.2M NaCl, 2mM DTT, 10% glycerol

Purity

> 95% by SDS-PAGE

Tag

His-Tag

Application

SDS-PAGE

Storage Condition

Can be stored at +2C to +8C for 1 week. For long term storage, aliquot and store at -20C to -80C. Avoid repeated freezing and thawing cycles.

BACKGROUND

Description

ROBLD3, also known as MAPBPIP, belongs to the GAMAD family. It is an adapter protein that enhances the efficiency of the MAP kinase cascade and facilitates the activation of MAPK2. ROBLD3 compels the recruitment of MP1 to late endosomes where they form a very stable heterodimeric complex required for ERK activation on

Recombinant human ROBLD3/LAMTOR2 protein

Catalog Number: ATGP0834

endosomes. Recombinant human ROBLD3 protein, fused to His-tag at N-terminus, was expressed in E. coli and purified by using conventional chromatography techniques.

Amino acid Sequence

MGSSHHHHHH SGLVPRGSH MGSMLRPKA LTQVLSQANT GGVQSTLLLN NEGSLAYS GYDGDARVTA AIASNIWAAY
DRNGNQAFNE DNLKFI LDC MEGRVAITRV ANLLLCMYAK ETVGFGMLKA KAQALVQYLE EPLTQVAAS

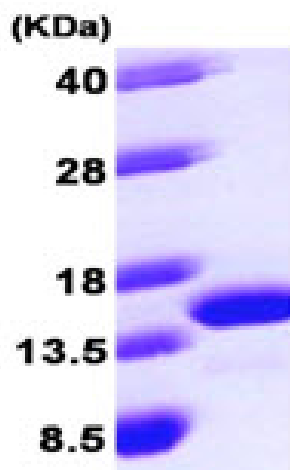
General References

Sancak Y., et al. (2010) Cell. 141(2):290-303.

Waters S., et al. (2009) FEBS Lett. 583(12):1846-52.

DATA

SDS-PAGE



3ug by SDS-PAGE under reducing condition and visualized by coomassie blue stain.

15% SDS-PAGE (3ug)