

Recombinant human RalB protein

Catalog Number: ATGP0839

PRODUCT INFORMATION

Expression system

E.coli

Domain

1-203aa

UniProt No.

P11234

NCBI Accession No.

NP_002872

Alternative Names

Ras-related protein Ral-B, RAS like proto-oncogene B, Ras related GTP binding protein B

PRODUCT SPECIFICATION

Molecular Weight

25.6 kDa (227aa) confirmed by MALDI-TOF

Concentration

1mg/ml (determined by Bradford assay)

Formulation

Liquid in. 20mM Tris-HCl buffer (pH 8.0) containing 10% glycerol, 0.1M NaCl, 1mM DTT

Purity

> 90% by SDS-PAGE

Tag

His-Tag

Application

SDS-PAGE

Storage Condition

Can be stored at +2C to +8C for 1 week. For long term storage, aliquot and store at -20C to -80C. Avoid repeated freezing and thawing cycles.

BACKGROUND

Description

RALB, also called Ras-related protein Ral-B, belongs to subfamily of Ras-related GTPases. This protein is activated by a unique nucleotide exchange factor, Ral GDS, and deactivated by a distinct GTPase-activating protein. It plays a role in the late stages of cytokinesis and is required for the abscission of the bridge joining the sister cells emerging from mitosis. Also it is required for suppression of apoptosis. Recombinant human RALB protein, fused to His-tag at N-terminus, was expressed in E. coli and purified by using conventional chromatography.

Recombinant human Ra1B protein

Catalog Number: ATGP0839

Amino acid Sequence

MGSSHHHHHH SSSLVPRGSH MGSMAANKS KGQSSLALHK VIMVGSGGVG KSALTQFMY DEFVEDYEPT
KADSYRKKV LDGEEVQIDI LDTAGQEDYA AIRDNYFRSG EGFLLVFSIT EHESFTATAE FREQILRVKA EEDKIPLLVV
GNKSDLEERR QVPVEEARSK AEEWGVQYVE TSAKTRANVD KVFFDLMREI RTKKMSENKD KNGKKSSKNK KSKERC

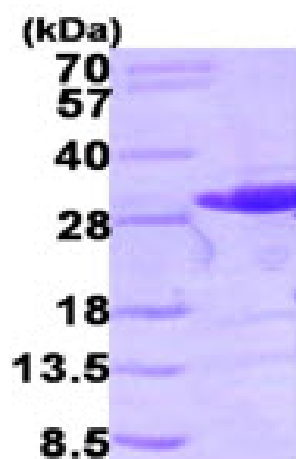
General References

Willey G.M., et al. (1993), Biochem. Biophys. Res. Comm., 194: 552-559.

Jullien-Flores V., et al. (1995). J. Biol. Chem. 270: 22473-22477

DATA

SDS-PAGE



3ug by SDS-PAGE under reducing condition and visualized by coomassie blue stain.

15% SDS-PAGE (3ug)