

# Recombinant human RAC3 protein

Catalog Number: ATGP0843

## PRODUCT INFORMATION

---

### Expression system

E.coli

### Domain

1-189aa

### UniProt No.

P60763

### NCBI Accession No.

NP\_005043

### Alternative Names

ras-related C3 botulinum toxin substrate 3, p21-Rac3, Rac1B, RAS related C3 botulinum substrate 3, Ras related C3 botulinum toxin substrate 3, rho family small GTP binding protein Rac3, Rho family small GTP binding protein Rac3, RP23-84C12.18

## PRODUCT SPECIFICATION

---

### Molecular Weight

21 kDa (189aa) confirmed by MALDI-TOF

### Concentration

0.5mg/ml (determined by Bradford assay)

### Formulation

Liquid in. 20mM Tris-HCl buffer (pH 8.0) containing 10% glycerol, 2mM DTT, 200mM NaCl, 0.1mM PMSF, 1mM EDTA

### Purity

> 95% by SDS-PAGE

### Tag

Non-Tagged

### Application

SDS-PAGE

### Storage Condition

Can be stored at +2C to +8C for 1 week. For long term storage, aliquot and store at -20C to -80C. Avoid repeated freezing and thawing cycles.

## BACKGROUND

---

### Description

RAC3 is a member of the Rac subfamily of the Rho small G proteins. This protein is a small (~21 kDa) monomeric GTP-binding protein, and is an important component of intracellular signalling pathway, including the control of cell growth, cytoskeletal reorganization, and the activation of protein kinases. Recombinant human RAC3 protein

# Recombinant human RAC3 protein

Catalog Number: ATGP0843

was expressed in E. coli and purified by using conventional chromatography techniques.

## Amino acid Sequence

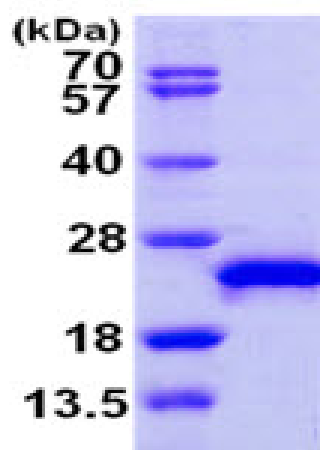
MQAIKCVVVG DGAVGKTCLL ISYTTNAFPG EYIPTVFDNY SANVMVDGKP VNLGLWDTAG QEDYDRLRPL SYPQTDVFLI  
CFSLVSPASF ENVRAKWYPE VRHHCPTPI LLVGTKLCLR DDKDTIERLR DKKLAPITYP QGLAMAREIG SVKYLECSAL  
TQRGLKTVFD EAIRAVLCPV PVKKPGKKC

## General References

De Langhe S., et al. (2002) *Int. J. Mol. Med.* 9:451-459  
Haataja L., et al. (1997) *J. Biol. Chem.* 272 (33): 20384-88.

## DATA

### SDS-PAGE



3ug by SDS-PAGE under reducing condition and visualized by coomassie blue stain.

15% SDS-PAGE (3ug)