

Recombinant human ARFL2/ARL2 protein

Catalog Number: ATGP0845

PRODUCT INFORMATION

Expression system

E.coli

Domain

1-184aa

UniProt No.

P36404

NCBI Accession No.

AAM12602

Alternative Names

ADP-ribosylation factor-like protein 3, ARFL3, ADP ribosylation factor like GTPase 3

PRODUCT SPECIFICATION

Molecular Weight

23.0 kDa (204aa) confirmed by MALDI-TOF

Concentration

0.25mg/ml (determined by Bradford assay)

Formulation

Liquid in. 20mM Tris-HCl buffer (pH 8.0) containing 0.1mM PMSF, 1mM DTT, 40% glycerol

Purity

> 90% by SDS-PAGE

Tag

His-Tag

Application

SDS-PAGE

Storage Condition

Can be stored at +2C to +8C for 1 week. For long term storage, aliquot and store at -20C to -80C. Avoid repeated freezing and thawing cycles.

BACKGROUND

Description

ARL2 belongs to the ADP-ribosylation factor (ARF) family. This protein functions as a component of a secretory pathway that is involved in the Ca²⁺-dependent release of acetylcholine. It plays a role in the folding of tubule proteins, thereby playing an important role in microtubule dynamics and cell cycle progression. Unlike other members of the ARF family, ARL2 does not act as an activator of the catalytic subunit of cholera toxin. Recombinant human ARL2 protein, fused to His-tag at N-terminus, was expressed in E. coli and purified by using conventional chromatography.

Recombinant human ARFL2/ARL2 protein

Catalog Number: ATGP0845

Amino acid Sequence

<MGSSHHHHH SSGLVPRGSH> MGLLTILKKM KQKERELRLL MLGLDNAGKT TILKKFNGED IDTISPTLGF NIKTLEHRGF
KLNIWDVGGQ KSLRSYWRNY FESTDGLIWW VDSADRQRMQ DCQRELQSL VEERLAGATL LIFANKQDLP GALSSNAIRE
ALELDSIRSH HWCIQGCSAV TGENLLPGID WLLDDISSRI FTAD

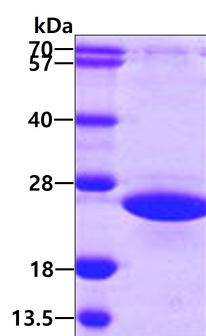
General References

Smith DF., et al. (2010) Mol Biochem Parasitol. 173(2):123-31.

Dumontet C., et al (2009) PLoS One. 4(10):e7478.

DATA

SDS-PAGE



3ug by SDS-PAGE under reducing condition and visualized by coomassie blue stain.