

Recombinant human CRKL protein

Catalog Number: ATGP0857

PRODUCT INFORMATION

Expression system

E.coli

Domain

1-303aa

UniProt No.

P46109

NCBI Accession No.

NP_005198.1

Alternative Names

CRK like proto-oncogene, Adaptor protein, V-crk avian sarcoma virus CT10 oncogene homolog-like

PRODUCT SPECIFICATION

Molecular Weight

35.9 kDa (323aa) confirmed by MALDI-TOF

Concentration

1mg/ml (determined by Bradford assay)

Formulation

Liquid in. 20mM Tris-HCl buffer (pH 8.0) containing 10% glycerol, 2mM DTT, 0.1M NaCl.

Purity

> 90% by SDS-PAGE

Tag

His-Tag

Application

SDS-PAGE

Storage Condition

Can be stored at +2C to +8C for 1 week. For long term storage, aliquot and store at -20C to -80C. Avoid repeated freezing and thawing cycles.

BACKGROUND

Description

CRKL is a protein kinase containing SH2 and SH3 (src homology) domains which has been shown to activate the RAS and Jun kinase signaling pathways and transform fibroblasts in a RAS-dependent fashion. It is a substitute of the BCR-ABL tyrosine kinase, plays a role in fibroblast transformation by BCR-ABL, and has oncogenic potential. Recombinant human CRKL protein, fused to His-tag at N-terminus, was expressed in E. coli and purified by using conventional chromatography techniques.

Recombinant human CRKL protein

Catalog Number: ATGP0857

Amino acid Sequence

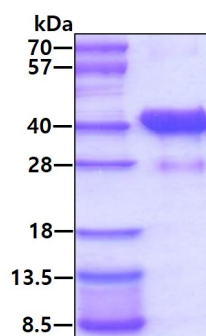
<MGSSHHHHHH SSGLVPRGSH> MSSARFDSSD RSAWYMGPVV RQEAQTRLQG QRHGMFLVRD SSTCPGDYVL SVSENSRVSH YIINSLPNRR FKIGDQEFDH LPALLEFYKI HYLDTTTTLIE PAPRYPSPPM GSVSAPNLPT AEDNLEYVRT LYDFPGNDAAE DLPFKKGEIL VIIIEKPEEQW WSARNKDGRV GMIPVPYVEK LVRSSPHGKH GNRNSNSYGI PEPAHAYAQP QTTTTPLPAVS GSPGAAITPL PSTQNGPVFA KAIQKRVPCA YDKTALALEV GDIVKVTRMN INGQWEGEVN GRKGLFPFTH VKIFDPQNPDP ENE

General References

Arai A., et al. (2001) J Biol Chem. 276(35):33282-90.
Senechal K., et al. (1996) J Biol Chem. 271(38):23255-61.

DATA

SDS-PAGE



3ug by SDS-PAGE under reducing condition and visualized by coomassie blue stain.