

Recombinant human METTL1 protein

Catalog Number: ATGP0869

PRODUCT INFORMATION

Expression system

E.coli

Domain

1-276aa

UniProt No.

Q9UBP6

NCBI Accession No.

NP_005362

Alternative Names

Methyltransferase like 1, TRM8, YDL201w

PRODUCT SPECIFICATION

Molecular Weight

33.6 kDa (296aa) confirmed by MALDI-TOF

Concentration

0.5mg/ml (determined by Bradford assay)

Formulation

Liquid in. 20mM Tris-HCl buffer (pH 8.0) containing 10% glycerol, 1mM DTT, 50mM NaCl

Purity

> 90% by SDS-PAGE

Tag

His-Tag

Application

SDS-PAGE

Storage Condition

Can be stored at +2C to +8C for 1 week. For long term storage, aliquot and store at -20C to -80C. Avoid repeated freezing and thawing cycles.

BACKGROUND

Description

METTL1 is known as tRNA (guanine-N (7) -) -methyltransferase which belongs to the methyltransferase superfamily. METTL1 shows high sequence similarity to yeast ORF YDL201w and has been shown to be inactivated by phosphorylation. This protein contains a conserved S-adenosylmethionine-binding motif and is inactivated by phosphorylation. It catalyzes the formation of N (7) -methylguanine at position 46 (m7G46) in tRNA. Recombinant human METTL1 protein, fused to His-tag at N-terminus, was expressed in E. coli and purified by using conventional chromatography techniques.

Recombinant human METTL1 protein

Catalog Number: ATGP0869

Amino acid Sequence

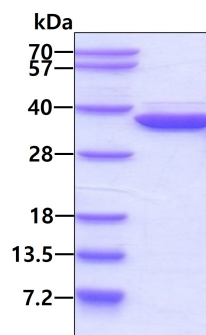
<MGSSHHHHHH SSGLVPRGSH> MAAETRNVAG AEAPPPQKRY YRQRAHSNPM ADHTLRYPVK PEEMDWSELY
PEFFAPLTQN QSHDDPKDKK EKRAQAQVEF ADIGCGYGGL LEVELSPLFPD TLILGLEIRV KVSDYVQDRI RALRAAPAGG
FQNIACLRSN AMKHLPNFFY KGQLTKMFFL FPDPHFKRTK HKWRIISPTL LAEYAYVLRV GGLVYTITDV LELHDWMCTH
FEEHPLFERV PLEDLSEDPV VGHLGTSTEE GKKVLRNGGK NFPAIFRRIQ DPVLQAVTSQ TSLPGH

General References

Matsumoto K., et al. (2008) J. Biotechnol. 133: 453-460.
Alexandrov A., et al. (2002) RNA 8:1253-1266

DATA

SDS-PAGE



3ug by SDS-PAGE under reducing condition and visualized by coomassie blue stain.