

# Recombinant human TPM2 protein

Catalog Number: ATGP0873

## PRODUCT INFORMATION

---

### Expression system

E.coli

### Domain

1-284aa

### UniProt No.

P07951

### NCBI Accession No.

NP\_998839

### Alternative Names

Tropomyosin beta chain isoform 2, AMCD1, DA1, DA2B, NEM4, TMSB

## PRODUCT SPECIFICATION

---

### Molecular Weight

35.1 kDa (304aa) confirmed by MALDI-TOF (Molecular weight on SDS-PAGE will appear higher)

### Concentration

0.5mg/ml (determined by Bradford assay)

### Formulation

Liquid in. 20mM Tris-HCl buffer (pH 8.0) containing 1mM DTT, 30% glycerol, 100mM NaCl

### Purity

> 90% by SDS-PAGE

### Tag

His-Tag

### Application

SDS-PAGE

### Storage Condition

Can be stored at +2C to +8C for 1 week. For long term storage, aliquot and store at -20C to -80C. Avoid repeated freezing and thawing cycles.

## BACKGROUND

---

### Description

Tropomyosin beta chain isoform 2, also known as TPM2, is a member of the actin filament binding protein family which mainly expressed in slow, type 1 muscle fibers. Mutations in this gene can alter the expression of other sarcomeric tropomyosin proteins, and cause cap disease, nemaline myopathy and distal arthrogyriposis syndromes. Recombinant human TPM2 protein, fused to His-tag at N-terminus, was expressed in E. coli and purified by using conventional chromatography techniques.

## Recombinant human TPM2 protein

Catalog Number: ATGP0873

### Amino acid Sequence

MGSSHHHHHH SSGLVPRGSH MDAIKKKMQM LKLDKENAID RAEQAEADKK QAEDRCKQLE EEQQALQKKL KGTEDEVEKY  
SESVKEAQEK LEQAEKKATD AEADVASLNR RIQLVEEELD RAQERLATAL QKLEEAEKAA DESERGMKVI ENRAMKDEEK  
MELQEMQLKE AKHIAEDSDR KYEEVARKLV ILEGELERSE ERAEVAESRA RQLEEEELRTM DQALKSLMAS EEEYSTKEDK  
YEEIKLLEE KLKEAETRAE FAERSVAKLE KTIDDLLETL ASAKEENVEI HQTLDQTLLE LNNL

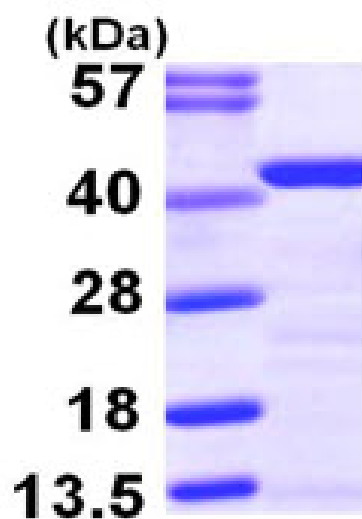
### General References

Hunt CC., et al. (1995) Cytogenet Cell Genet. 71(1):94-5.

Tiso N., et al. (1997) Biochem Biophys Res Commun. 13(2):347-50.

## DATA

### SDS-PAGE



3ug by SDS-PAGE under reducing condition and visualized by coomassie blue stain.

15% SDS-PAGE (3ug)