

# Recombinant human Gamma-glutamylcyclotransferase/GGCT protein

Catalog Number: ATGP0887

## PRODUCT INFORMATION

---

### Expression system

E.coli

### Domain

1-188aa

### UniProt No.

O75223

### NCBI Accession No.

NP\_076956

### Alternative Names

Gamma-glutamylcyclotransferase, C7orf24, CRF21, FLJ11717, GCTG, Ggc, MGC3077, Cytochrome c-releasing factor 21

## PRODUCT SPECIFICATION

---

### Molecular Weight

23.2 kDa (208aa) confirmed by MALDI-TOF

### Concentration

1mg/ml (determined by BCA assay)

### Formulation

Liquid in. 20mM Tris-HCl buffer (pH 8.0) containing 10% glycerol

### Purity

> 95% by SDS-PAGE

### Tag

His-Tag

### Application

SDS-PAGE

### Storage Condition

Can be stored at +2C to +8C for 1 week. For long term storage, aliquot and store at -20C to -80C. Avoid repeated freezing and thawing cycles.

## BACKGROUND

---

### Description

GGCT, also known as gamma-glutamylcyclotransferase, belongs to the family of transferases, specifically the aminoacyltransferases. This protein catalyzes the formation of 5-oxoproline from gamma-glutamyl dipeptides and may play a significant role in glutathione homeostasis. GGCT induces release of cytochrome c from mitochondria with resultant induction of apoptosis. Recombinant human GGCT protein, fused to His-tag at N-terminus, was expressed in E. coli and purified by using conventional chromatography techniques.

# Recombinant human Gamma-glutamylcyclotransferase/GGCT protein

Catalog Number: ATGP0887

## Amino acid Sequence

MGSSHHHHHH SSGLVPRGSH MANS GCKDVT GPDEESFLYF AYGSNLLTER IHLRNPSAAF FCVARLQDFK LDFGNSQGKT  
SQTWHGGIAT IFQSPGDEVW GVVWKMNKSN LNSLDEQEGV KSGMYVVIEV KVATQEGKEI TCRSYLMTNY ESAPPSPQYK  
KIICMGAKEN GLPLEYQEKL KAIEPN DYTG KVSEEIEDII KKGETQTL

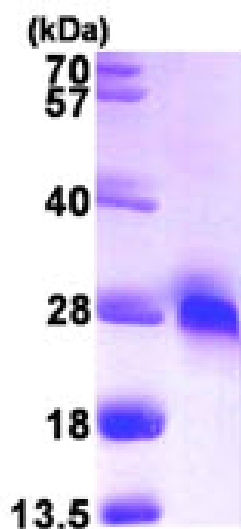
## General References

Masuda Y., et al. (2006) Biochem Biophys Res Commun. 346(2):454-60.

Oakley Aj., et al. (2008) J Biol Chem. 283(32):22031-42.

## DATA

### SDS-PAGE



3ug by SDS-PAGE under reducing condition and visualized by coomassie blue stain.

15% SDS-PAGE (3ug)