

# Recombinant human RAB1A protein

Catalog Number: ATGP0900

## PRODUCT INFORMATION

---

### Expression system

E.coli

### Domain

1-205aa

### UniProt No.

P62820

### NCBI Accession No.

NP\_004152

### Alternative Names

Ras-related protein Rab-1A isoform 1, DKFZp564B163, RAB1, YPT1, RAB1A member RAS oncogene family, Rab GTPase YPT1, YPT1-related protein

## PRODUCT SPECIFICATION

---

### Molecular Weight

24.8 kDa (225aa) confirmed by MALDI-TOF

### Concentration

0.5mg/ml (determined by Bradford assay)

### Formulation

Liquid in. 20mM Tris-HCl buffer (pH 8.0) containing 20% glycerol, 0.1M NaCl, 1mM DTT

### Purity

> 95% by SDS-PAGE

### Tag

His-Tag

### Application

SDS-PAGE

### Storage Condition

Can be stored at +2C to +8C for 1 week. For long term storage, aliquot and store at -20C to -80C. Avoid repeated freezing and thawing cycles.

## BACKGROUND

---

### Description

RAB1A, also known as ras-related protein Rab-1A, is a member of ras-related superfamily. Rab proteins play an important role for, either in endocytosis or in biosynthetic protein transport. Rab1a protein controls vesicle traffic from the endoplasmic reticulum to the Golgi apparatus. Recombinant human RAB1A protein, fused to His-tag at N-terminus, was expressed in E. coli and purified by using conventional chromatography.

# Recombinant human RAB1A protein

Catalog Number: ATGP0900

## Amino acid Sequence

<MGSSHHHHH SSGLVPRGSH> MSSMNPEYDY LFKLLIGDS GVGKSCLLLR FADDTYTESY ISTIGVDFKI RTIELDGKTI  
KLQIWDTAGQ ERFRTITSSY YRGAHGIIIV YDVTDQESFN NVKQWLQEID RYASENVNKL LVGNKCDLTT KKVVDYTTAK  
EFADSLGIPF LETSAKNATN VEQSFMTMAA EIKKRMGPGA TAGGAEKSNV KIQSTPVKQS GGGCC

## General References

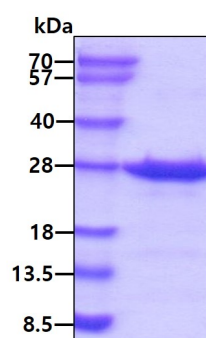
Zahraoui A, et al. (1989), J. Biol. Chem., 264: 12394-12401.

Chavrier P., et al. (1992). Gene. 112: 261-264.

## DATA

---

### SDS-PAGE



3ug by SDS-PAGE under reducing condition and visualized by coomassie blue stain.