

Recombinant human RAB6B protein

Catalog Number: ATGP0918

PRODUCT INFORMATION

Expression system

E.coli

Domain

1-208aa

UniProt No.

Q9NRW1

NCBI Accession No.

NP_057661

Alternative Names

Ras-related protein Rab-6B, RAB6B member RAS oncogene family

PRODUCT SPECIFICATION

Molecular Weight

25.6 kDa (228aa) confirmed by MALDI-TOF

Concentration

1mg/ml (determined by Bradford assay)

Formulation

Liquid in. 20mM Tris-HCl buffer (pH 8.0) containing 20% glycerol, 0.1M NaCl, 1mM DTT

Purity

> 95% by SDS-PAGE

Tag

His-Tag

Application

SDS-PAGE

Storage Condition

Can be stored at +2C to +8C for 1 week. For long term storage, aliquot and store at -20C to -80C. Avoid repeated freezing and thawing cycles.

BACKGROUND

Description

RAB6B, also known as ras-related protein Rab-6B, belongs to Rab6 family of the small GTPase superfamily. The Rab6 subfamily consists of three different isoforms: Rab6A, Rab6A' and Rab6B. Both Rab6A and Rab6A' are ubiquitously expressed whereas Rab6B is predominantly expressed in brain. Rab6 is a key regulator in the retrograde transfer from endosomes via the Golgi to the ER and may function in retrograde transport in neuronal cells. Recombinant human RAB6B protein, fused to His-tag at N-terminus, was expressed in E. coli and purified by using conventional chromatography.

Recombinant human RAB6B protein

Catalog Number: ATGP0918

Amino acid Sequence

MGSSHHHHHH SGLVPRGSH MSAGGDFGNP LRFKLVFLG EQSVGKTS LI TRFMYSFDN TYQATIGIDF LSKTMYLEDR
TVRLQLWDTA GQERFRSLIP SYIRDSTVAV VYDITNLNS FQTSKWIDD VRTERGSDVI IMLVGNKTDL ADKRQITIEE
GEQRAKELSV MFIETSAKTG YNVKQLFRRV ASALPGMENV QEKSKEGMID IKLDKPQEP ASEG GCSC

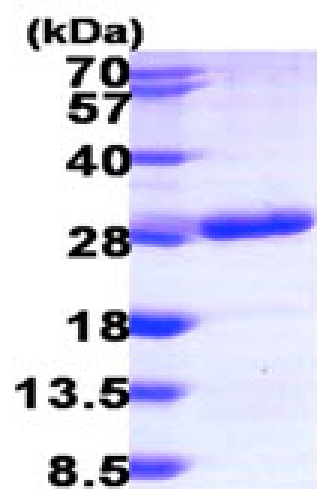
General References

Wanschers B, et al. (2008), Cell Motil Cytoskeleton., 65:183-96.

Wanschers BF., et al. (2007). Exp Cell Res. 313:3408-20.

DATA

SDS-PAGE



3ug by SDS-PAGE under reducing condition and visualized by coomassie blue stain.

15% SDS-PAGE (3ug)