

Recombinant human RERG protein

Catalog Number: ATGP0921

PRODUCT INFORMATION

Expression system

E.coli

Domain

1-199aa

UniProt No.

Q96A58

NCBI Accession No.

NP_116307

Alternative Names

Ras-related and estrogen-regulated growth inhibitor, MGC15754

PRODUCT SPECIFICATION

Molecular Weight

24.7 kDa (219aa) confirmed by MALDI-TOF (Molecular weight on SDS-PAGE will appear higher)

Concentration

0.25mg/ml (determined by Bradford assay)

Formulation

Liquid in. 20mM Tris-HCl buffer (pH 8.0) containing 0.2M NaCl, 5mM DTT, 50% glycerol

Purity

> 85% by SDS-PAGE

Tag

His-Tag

Application

SDS-PAGE

Storage Condition

Can be stored at +2C to +8C for 1 week. For long term storage, aliquot and store at -20C to -80C. Avoid repeated freezing and thawing cycles.

BACKGROUND

Description

RERG is a 199 amino acid protein that localizes in the cytoplasm and belongs to the Ras subfamily of small GTPases. RERG is expressed in pancreas, liver, skin, lung, brain, kidney and heart tissue. It is critical mediators of diverse cell signaling pathways, including those leading to cell proliferation, cytoskeletal organization and secretion. Recombinant human RERG protein, fused to His-tag at N-terminus, was expressed in E. coli and purified by using conventional chromatography techniques.

Recombinant human RERG protein

Catalog Number: ATGP0921

Amino acid Sequence

MGSSHHHHHH SSGLVPRGSH MAKSAEVKLA IFGRAGVGKS ALVVRFLTKR FIWEYDPTLE STYRHQATID DEVVSMEILD
TAGQEDTIQR EGHMRWGEGF VLVYDITDRG SFEEVLPLKN ILDEIKKPKN VTLILVGNKA DLDHSRQVST EEEKELATEL
ACAFYECSAC TEGENITEIF YELCREVRRR RMVQGKTRRR SSTTHVKQAI NKMLTKISS

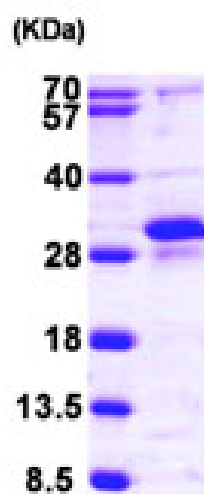
General References

Woodfield GW., et al. (2007) Cancer Res. 67(18):8439-43.

Finlin BS., et al. (2001) J Biol Chem. 276(45):42259-67.

DATA

SDS-PAGE



3ug by SDS-PAGE under reducing condition and visualized by coomassie blue stain.

15% SDS-PAGE (3ug)