

Recombinant human MESDC2 protein

Catalog Number: ATGP0933

PRODUCT INFORMATION

Expression system

E.coli

Domain

34-234aa

UniProt No.

Q14696

NCBI Accession No.

NP_055969

Alternative Names

LDLR chaperone MESD, BOCA, KIAA0081, MESD

PRODUCT SPECIFICATION

Molecular Weight

24.9 kDa (222aa) confirmed by MALDI-TOF (Molecular weight on SDS-PAGE will appear higher)

Concentration

1mg/ml (determined by BCA assay)

Formulation

Liquid in. Phosphate-Buffered Saline (pH 7.4) containing 20% Glycerol

Purity

> 90% by SDS-PAGE

Tag

His-Tag

Application

SDS-PAGE

Storage Condition

Can be stored at +2C to +8C for 1 week. For long term storage, aliquot and store at -20C to -80C. Avoid repeated freezing and thawing cycles.

BACKGROUND

Description

MESDC2, also known as Mesoderm development candidate 2, is required for formation of the primitive streak and mesoderm during embryogenesis. This protein binds to the Wnt co-receptors LRP5 and LRP6 in the endoplasmic reticulum and is required for their proper folding and cell surface expression. Recombinant human MESDC2 protein, fused to His-tag at N-terminus, was expressed in E. coli and purified by using conventional chromatography.

Recombinant human MESDC2 protein

Catalog Number: ATGP0933

Amino acid Sequence

<MGSSHHHHHH SSGLVPRGSH M>AEGSPGTPD ESTPPRKKK KDIRDYNDAD MARLLEQWEK DDDIEEGDLP
EHKRPSAPVD FSKIDPSKPE SILKMTKKGK TLMMFVTVSG SPTEKETEEI TSLWQGSLFN ANYDVQRFIV GSDRAIFMLR
DGSYAWEIKD FLVGQDRCAD VTLEGQVYPG KGGGSKEKNK TKQDKGKKKK EGDLSRSSK EENRAGNKRE DL

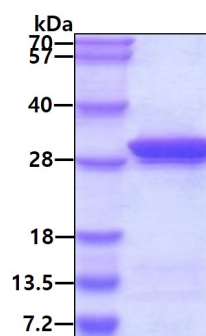
General References

Kohler C, et al. (2006). J Struct Funct Genomics, 7:131-8.

Wines ME., et al. (2001). Genomics., 72:88-98.

DATA

SDS-PAGE



3ug by SDS-PAGE under reducing condition and visualized by coomassie blue stain