

Recombinant human Sorcin/SRI protein

Catalog Number: ATGP0941

PRODUCT INFORMATION

Expression system

E.coli

Domain

1-198aa

UniProt No.

P30626

NCBI Accession No.

NP_003121

Alternative Names

Sorcin, 22 kDa protein, CP22, V19, SCN

PRODUCT SPECIFICATION

Molecular Weight

24.1 kDa (221aa) confirmed by MALDI-TOF

Concentration

0.5mg/ml (determined by Bradford assay)

Formulation

Liquid in. 20mM Tris-HCl buffer (pH 8.0) containing 40% glycerol, 0.2M NaCl, 1mM DTT, 0.1mM PMSF

Purity

> 90% by SDS-PAGE

Tag

His-Tag

Application

SDS-PAGE

Storage Condition

Can be stored at +2C to +8C for 1 week. For long term storage, aliquot and store at -20C to -80C. Avoid repeated freezing and thawing cycles.

BACKGROUND

Description

Sorcin, also known as SRI, is a 22-kDa calcium-binding protein initially identified in multidrug-resistant cells. SRI modulates excitation-contraction coupling in the heart and contributes to calcium homeostasis in the heart sarcoplasmic reticulum. Recombinant human SRI protein, fused to His-tag at N-terminus, was expressed in E. coli and purified by using conventional chromatography.

Amino acid Sequence

MGSSHHHHHHH SGLVPRGSH MGSMAYPGHP GAGGGYYPGG YGGAPGGPAF PGQTQDPLYG YFAAVAGQDG

Recombinant human Sorcin/SRI protein

Catalog Number: ATGP0941

QIDADELQRC LTQSGIAGGY KPFNLETCLL MVSMLDRDMS GTMGFNEFKE LWAVLNGWRQ HFISFD TDRS GTVDPQELQK
ALTTMGFRLS PQAVNSIAKR YSTNGKITFD DYIACCVKLR ALTDSFRRRD TAQQGVVNFV YDDFIQCVMS V

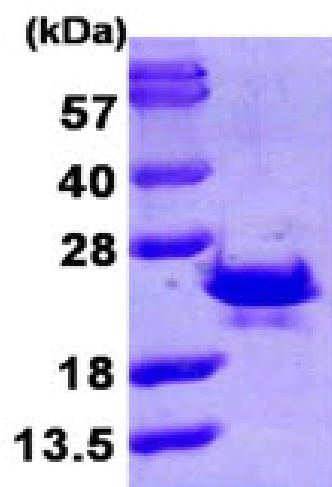
General References

Landriscina M., et al. (2010) Cancer Res. 70(16):6577-86

Meyers MB., et al. (1995) J Biol Chem. 270(44):26411-8

DATA

SDS-PAGE



3ug by SDS-PAGE under reducing condition and visualized by coomassie blue stain.

15% SDS-PAGE (3ug)