

Recombinant human EF-1 beta/EEF1B2 protein

Catalog Number: ATGP0946

PRODUCT INFORMATION

Expression system

E.coli

Domain

1-225aa

UniProt No.

P24534

NCBI Accession No.

NP_066944

Alternative Names

Elongation factor 1-beta, EF-1-beta, EEF1B, EEF1B1, EF1B, Eukaryotic translation elongation factor 1 beta 2

PRODUCT SPECIFICATION

Molecular Weight

25.8 kDa (233aa) confirmed by MALDI-TOF

Concentration

0.5mg/ml (determined by Bradford assay)

Formulation

Liquid in. 20mM Tris-HCl buffer (pH 8.0) containing 10% glycerol, 1mM DTT, 100mM NaCl

Purity

> 90% by SDS-PAGE

Tag

His-Tag

Application

SDS-PAGE

Storage Condition

Can be stored at +2C to +8C for 1 week. For long term storage, aliquot and store at -20C to -80C. Avoid repeated freezing and thawing cycles.

BACKGROUND

Description

Elongation factor 1-beta, also known as EEF1B2, is a translation elongation factor. The protein is a guanine nucleotide exchange factor involved in the transfer of aminoacylated tRNAs to the ribosome. EEF1B2 and EEF1D stimulate the exchange of GDP bound to EEF1A to GTP. Recombinant human EEF1B2 protein, fused to His-tag at C-terminus, was expressed in E. coli and purified by using conventional chromatography techniques.

Amino acid Sequence

MGFGDLKSPA GLQVLNDYLA DKSYIEGYVP SQADVAVFEA VSSPPADLC HALRWYHNHIK SYEKEKASLP GVKKALGKYG

Recombinant human EF-1 beta/EEF1B2 protein

Catalog Number: ATGP0946

PADVEDTTGS GATDSKDDDD IDLFGSDDEE ESEEAKRLRE ERLAQYESKK AKKPALVAKS SILLDVLPWD DETDMAKLEE
CVRSIQADGL VWGSSKLVVPV GYGIKKLQIQ CVVEDDKVGT DMLLEEQITAF EDYVQSMDDVA AFNKI<LEHHH HHH>

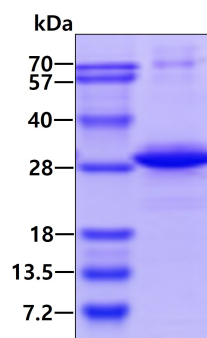
General References

Byun HO., et al. (2009) *Cancer Res*, 69(11):4638-47.

Sang Lee J., et al. (2002) *Biochem Biophys Res Commun*. 291(1):158-64.

DATA

SDS-PAGE



3ug by SDS-PAGE under reducing condition and visualized by coomassie blue stain.