

# Recombinant human S100A2 protein

Catalog Number: ATGP0949

## PRODUCT INFORMATION

---

### Expression system

E.coli

### Domain

1-97aa

### UniProt No.

P29034

### NCBI Accession No.

NP\_005969

### Alternative Names

S100 calcium binding protein A2, CAN19, S100L

## PRODUCT SPECIFICATION

---

### Molecular Weight

13.1 kDa (117aa) confirmed by MALDI-TOF

### Concentration

1mg/ml (determined by Bradford assay)

### Formulation

Liquid in. 20mM Tris-HCl buffer (pH 8.0) containing 5mM DTT, 30% glycerol, 0.2M NaCl

### Purity

> 90% by SDS-PAGE

### Tag

His-Tag

### Application

SDS-PAGE

### Storage Condition

Can be stored at +2C to +8C for 1 week. For long term storage, aliquot and store at -20C to -80C. Avoid repeated freezing and thawing cycles.

## BACKGROUND

---

### Description

S100A2 is a member of the S100 family of proteins containing 2 EF-hand calcium-binding motifs. S100A2 may act as a modulator against excess calcium accumulation in normal human mammary epithelial cells and also play a role in suppressing tumor cell growth. This protein may have a tumor suppressor function. Recombinant human S100A2 protein, fused to His-tag at N-terminus, was expressed in E. coli and purified by using conventional chromatography techniques.

# Recombinant human S100A2 protein

Catalog Number: ATGP0949

## Amino acid Sequence

MGSSHHHHHH SSSLVPRGSH MCSSLEQALA VLVTTFHKYS CQEGDKFKLS KGEMKELLHK ELPSFVGEKV DEEGLKCLMG  
SLDENSDQQV DFQEYAVFLA LITVMCNDFF QGCPDRP

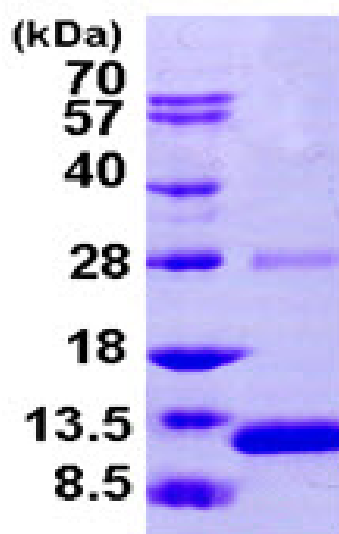
## General References

Nagy N., et al. (2001) cell carcinoma migration. Lab. Invest. 81: 599-612.  
El-Rifai W., et al. (2002) Cancer Res. 62: 6823-6826.

## DATA

---

### SDS-PAGE



3ug by SDS-PAGE under reducing condition and visualized by coomassie blue stain.

15% SDS-PAGE (3ug)