

# Recombinant human A2LD1/GGACT protein

Catalog Number: ATGP0959

## PRODUCT INFORMATION

---

### Expression system

E.coli

### Domain

1-153aa

### UniProt No.

Q9BVM4

### NCBI Accession No.

NP\_149101

### Alternative Names

Gamma-glutamylaminocyclotransferase, GGACT

## PRODUCT SPECIFICATION

---

### Molecular Weight

19.4 kDa (173aa) confirmed by MALDI-TOF

### Concentration

1mg/ml (determined by Bradford assay)

### Formulation

Liquid in. 20mM Tris-HCl buffer (pH 8.0) containing 10% glycerol, 0.1M NaCl

### Purity

> 95% by SDS-PAGE

### Tag

His-Tag

### Application

SDS-PAGE

### Storage Condition

Can be stored at +2C to +8C for 1 week. For long term storage, aliquot and store at -20C to -80C. Avoid repeated freezing and thawing cycles.

## BACKGROUND

---

### Description

A2LD1, also known as gamma-glutamylaminocyclotransferase, is an enzyme that converts gamma-glutamylamines to free amines and 5-oxoproline. It shows high activity toward gamma-glutamyl-epsilon-lysine, derived from the breakdown of fibrin and other proteins cross-linked by transglutaminases. This protein adopts the newly identified cyclotransferase fold, observed in gamma-glutamylcyclotransferase, an enzyme with activity toward gamma-glutamyl-alpha-amino acids. Recombinant human A2LD1 protein, fused to His-tag at N-terminus, was expressed in E. coli and purified by using conventional chromatography.

# Recombinant human A2LD1/GGACT protein

Catalog Number: ATGP0959

## Amino acid Sequence

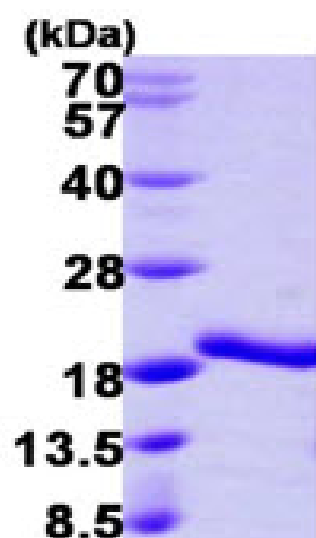
MGSSHHHHHH SGLVPRGSH MALVFVYGT L KRGQPNHRVL RDGAHGSAAF RARGRTLEPY PLVIAGEHNI PWLLHLPGSG  
RLVEGEVYAV DERMLRFLDD FESCPALYQR TVLRVQLLED RAPGAEPPA PTAVQCFVYS RATFPPEWAQ LPHHDSYDSE  
GPHGLRYNPR ENR

## General References

Oakley AJ, et al. (2010), J Biol Chem., 285:9642-8.  
Danson JW, et al. (2002), Anal Biochem., 303:120-30.

## DATA

### SDS-PAGE



3ug by SDS-PAGE under reducing condition and visualized by coomassie blue stain.

15% SDS-PAGE (3ug)