

# Recombinant human RCN2 protein

Catalog Number: ATGP0996

## PRODUCT INFORMATION

---

### Expression system

E.coli

### Domain

26-317aa

### UniProt No.

Q14257

### NCBI Accession No.

NP\_002893

### Alternative Names

Reticulocalbin-2, E6BP, ERC55

## PRODUCT SPECIFICATION

---

### Molecular Weight

36.8 kDa (313aa) confirmed by MALDI-TOF (Molecular weight on SDS-PAGE will appear higher)

### Concentration

1mg/ml (determined by Bradford assay)

### Formulation

Liquid in. 20mM Tris-HCl buffer (pH 8.0) containing 10% glycerol, 1mM DTT

### Purity

> 90% by SDS-PAGE

### Tag

His-Tag

### Application

SDS-PAGE

### Storage Condition

Can be stored at +2C to +8C for 1 week. For long term storage, aliquot and store at -20C to -80C. Avoid repeated freezing and thawing cycles.

## BACKGROUND

---

### Description

RCN2, also known as reticulocalbin-2, is belongs to the CREC protein family. RCN2 is a calcium-binding protein located in the lumen of the ER. This protein contains six conserved regions with similarity to a high affinity Ca (+2) -binding motif, the EF-hand. Recombinant human RCN2 protein, fused to His-tag at N-terminus, was expressed in E. coli and purified by using conventional chromatography.

### Amino acid Sequence

MGSSHHHHHH SGLVPRGSH MEELHYPLGE RRSYDREAL LGVQEDVDEY VKLGHEEQK RLQAIKKID LDSDGFLTES

# Recombinant human RCN2 protein

Catalog Number: ATGP0996

ELSSWIQMSF KHYAMQEAKQ QFVEYDKNSD DTVTWDEYNI QMYDRVIDFD ENTALDDAAE ESRKRLHLKD KKRFEKANQD  
SGPGLSLEEF IAFEHPPEEVD YMTEFVIQEA LEEHDKNGDG FVSLEEF LGD YRWDPTANED PEWILVEKDR FVNDYDKDND  
GRLDPQELLP WVPNNQIA QEEALHLIDE MDLNGDKKLS EEEILENPDL FLTSEATDYG RQLHDDYFYH DEL

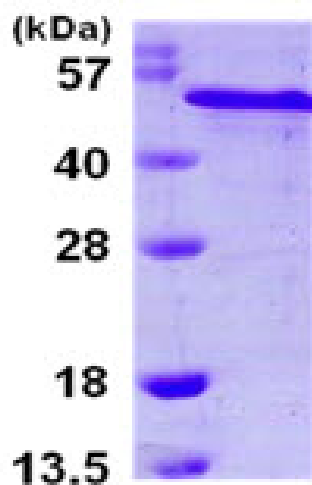
## General References

Ludvigsen M, et al. (2009) Proteomics. 9(23):5267-87

Wang JY, et al. (1997) Cytogenet Cell Genet. 79(1-2):60-1

## DATA

### SDS-PAGE



3ug by SDS-PAGE under reducing condition and visualized by coomassie blue stain.

15% SDS-PAGE (3ug)